

Anti-CD272 antibody (30-183 aa) [R09-4A1] (STJA0011098)

STJA0011098

GENERAL INFORMATION

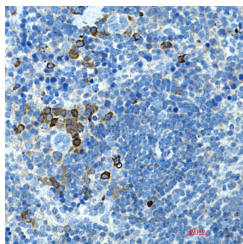
Product Type	Primary antibodies
Short Description	Rabbit monoclonal antibody anti-CD272 (30-183 aa) is suitable for use in Western Blot, Immunohistochemistry and Immunoprecipitation research applications.
Applications	WB/IHC-P/IP
Host/Source	Rabbit
Reactivity	Human/Mouse

PRODUCT PROPERTIES

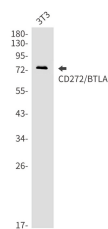
Clonality	Monoclonal
Clone ID	R09-4A1
Concentration	0.3 mg/ml
Conjugation	Unconjugated
Purification	Affinity Purified
Dilution Range	WB 1:500-1:1000 IHC 1:50-1:100 IP 1:20
Formulation	50mM Tris-Glycine (pH7.4) , 0.15M NaCl, 40% Glycerol, 0.01% Sodium azide and 0.05% BSA
Isotype	IgG
Storage	Store at 4°C short term. Aliquot and store at -20°C long term. Avoid freeze/thaw cycles.
Instruction	

TARGET INFORMATION

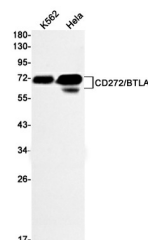
Gene ID	208154
Gene Symbol	Btla
Uniprot ID	BTLA_MOUSE
Immunogen	Recombinant protein of mouse CD272
Immunogen Region	30-183 aa
Specificity	
Immunogen Sequence	



Immunohistochemistry analysis of paraffin-embedded mouse spleen using CD272 antibody. High-pressure and temperature Sodium Citrate pH 6.0 was used for antigen retrieval.



Western blot analysis of CD272/BTLA in 3T3 lysates using CD272/BTLA antibody.



Western blot analysis of CD272/BTLA in K562, HeLa lysates using CD272/BTLA antibody.