

## Anti-Calb1 antibody (Full-length) [R06-4D6] (STJA0011057)

STJA0011057

### GENERAL INFORMATION

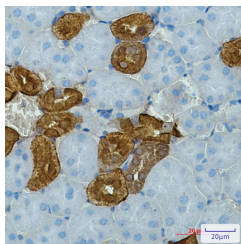
|                          |  |
|--------------------------|--|
| <b>Product Type</b>      | Primary antibodies   |
| <b>Short Description</b> | Rabbit monoclonal antibody anti-Calbindin (Full-length) is suitable for use in Western Blot, Immunohistochemistry and Immunoprecipitation research applications. |
| <b>Applications</b>      | WB/IHC-P/IP  |
| <b>Host/Source</b>       | Rabbit   |
| <b>Reactivity</b>        | Human/Mouse/Rat  |

### PRODUCT PROPERTIES

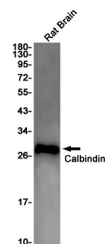
|                       |  |
|-----------------------|--|
| <b>Clonality</b>      | Monoclonal   |
| <b>Clone ID</b>       | R06-4D6  |
| <b>Concentration</b>  | 0.3 mg/ml  |
| <b>Conjugation</b>    | Unconjugated   |
| <b>Purification</b>   | Affinity Purified  |
| <b>Dilution Range</b> | WB 1:500-1:1000<br>IHC 1:50-1:100<br>IP 1:20   |
| <b>Formulation</b>    | 50mM Tris-Glycine (pH7.4) , 0.15M NaCl, 40% Glycerol, 0.01% Sodium azide and 0.05% BSA   |
| <b>Isotype</b>        | IgG  |
| <b>Storage</b>        | Store at 4°C short term. Aliquot and store at -20°C long term. Avoid freeze/thaw cycles. |
| <b>Instruction</b>    |  |

### TARGET INFORMATION

|                           |  |
|---------------------------|--|
| <b>Gene ID</b>            | 12307                                  |
| <b>Gene Symbol</b>        | Calb1                                  |
| <b>Uniprot ID</b>         | CALB1_MOUSE                            |
| <b>Immunogen</b>          | Recombinant protein of mouse Calbindin |
| <b>Immunogen Region</b>   | Full-length                            |
| <b>Specificity</b>        |  |
| <b>Immunogen Sequence</b> |  |



Immunohistochemistry analysis of paraffin-embedded mouse kidney using Calbindin antibody. High-pressure and temperature Sodium Citrate pH 6.0 was used for antigen retrieval.



Western blot analysis of Calbindin in rat Brain lysates using Calbindin antibody.