

Anti-BTF3 antibody (2-105 aa) [R01-2B7] (STJA0011049)

STJA0011049

GENERAL INFORMATION

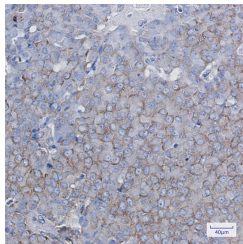
Product Type	Primary antibodies
Short Description	Rabbit monoclonal antibody anti-BTF3 (2-105 aa) is suitable for use in Western Blot, Immunohistochemistry and Immunoprecipitation research applications.
Applications	WB/IHC-P/IP
Host/Source	Rabbit
Reactivity	Human/Mouse/Rat

PRODUCT PROPERTIES

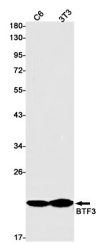
Clonality	Monoclonal
Clone ID	R01-2B7
Concentration	0.3 mg/ml
Conjugation	Unconjugated
Purification	Affinity Purified
Dilution Range	WB 1:500-1:1000 IHC 1:50-1:100 IP 1:20
Formulation	50mM Tris-Glycine (pH7.4) , 0.15M NaCl, 40% Glycerol, 0.01% Sodium azide and 0.05% BSA
Isotype	IgG
Storage	Store at 4°C short term. Aliquot and store at -20°C long term. Avoid freeze/thaw cycles.
Instruction	

TARGET INFORMATION

Gene ID	689
Gene Symbol	BTF3
Uniprot ID	BTF3_HUMAN
Immunogen	Recombinant protein of human BTF3
Immunogen Region	2-105 aa
Specificity	
Immunogen Sequence	



Immunohistochemistry analysis of paraffin-embedded Human breast cancer using BTF3 antibody. High-pressure and temperature Sodium Citrate pH 6.0 was used for antigen retrieval.



Western blot analysis of BTF3 in C6, 3T3 lysates using BTF3 antibody.