

Anti-TUBB4A antibody (430-444 aa) [R06-6A5] (STJA0011034)

STJA0011034

GENERAL INFORMATION

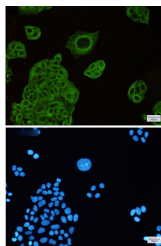
Product Type	Primary antibodies
Short Description	Rabbit monoclonal antibody anti-beta IV Tubulin (430-444 aa) is suitable for use in Western Blot, Immunohistochemistry, Immunocytochemistry and Immunofluorescence research applications.
Applications	WB/IHC-F/IHC-P/ICC/IF
Host/Source	Rabbit
Reactivity	Human/Mouse/Rat

PRODUCT PROPERTIES

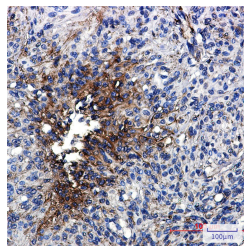
Clonality	Monoclonal
Clone ID	R06-6A5
Concentration	0.3 mg/ml
Conjugation	Unconjugated
Purification	Affinity Purified
Dilution Range	WB 1:500-1:1000 IHC 1:50-1:100 IF 1:50-1:200
Formulation	50mM Tris-Glycine (pH7.4) , 0.15M NaCl, 40% Glycerol, 0.01% Sodium azide and 0.05% BSA
Isotype	IgG
Storage	Store at 4°C short term. Aliquot and store at -20°C long term. Avoid freeze/thaw cycles.
Instruction	

TARGET INFORMATION

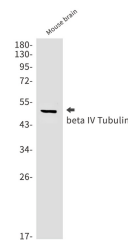
Gene ID	10382
Gene Symbol	TUBB4A
Uniprot ID	TBB4A_HUMAN
Immunogen	A synthetic peptide of human beta IV Tubulin
Immunogen Region	430-444 aa
Specificity	
Immunogen Sequence	



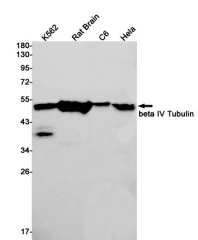
Immunocytochemistry analysis of beta IV Tubulin (green) in HeLa using beta IV Tubulin antibody, and DAPI (blue)



Immunohistochemistry analysis of paraffin-embedded Human brain using beta IV Tubulin antibody. High-pressure and temperature Sodium Citrate pH 6.0 was used for antigen retrieval.



Western blot analysis of beta IV Tubulin in mouse brain lysates using beta IV Tubulin antibody.



Western blot analysis of beta IV Tubulin in K562, rat Brain, C6, HeLa lysates using beta IV Tubulin antibody.

This product is suitable for in-vitro studies under the RESEARCH USE ONLY [RUO] licence. This product must not be used as for diagnostic or other medical purposes.
St John's Laboratory Ltd, Knowledge Dock Business Centre, University Way, London, E16 2RD | Tel: 0208 223 3081