

## Anti-ATP5F1B antibody (151-164 aa) [R01-4G1] (STJA0011009)

STJA0011009

### GENERAL INFORMATION

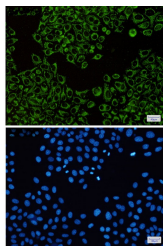
<b>Product Type</b>	Primary antibodies
<b>Short Description</b>	Rabbit monoclonal antibody anti-ATPB (151-164 aa) is suitable for use in Western Blot, Immunohistochemistry, Immunocytochemistry, Immunofluorescence and Immunoprecipitation research applications.
<b>Applications</b>	WB/IHC-F/IHC-P/ICC/IF/IP
<b>Host/Source</b>	Rabbit
<b>Reactivity</b>	Human/Mouse/Rat/Monkey

### PRODUCT PROPERTIES

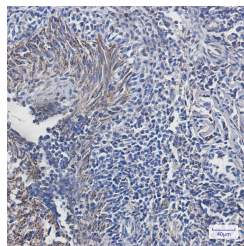
<b>Clonality</b>	Monoclonal
<b>Clone ID</b>	R01-4G1
<b>Concentration</b>	0.3 mg/ml
<b>Conjugation</b>	Unconjugated
<b>Purification</b>	Affinity Purified
<b>Dilution</b>	WB 1:500-1:1000
<b>Range</b>	IHC 1:50-1:100 IF 1:50-1:200 IP 1:20
<b>Formulation</b>	50mM Tris-Glycine (pH7.4) , 0.15M NaCl, 40% Glycerol, 0.01% Sodium azide and 0.05% BSA
<b>Isotype</b>	IgG
<b>Storage</b>	Store at 4°C short term. Aliquot and store at -20°C long term. Avoid freeze/thaw cycles.
<b>Instruction</b>	

### TARGET INFORMATION

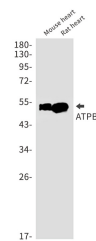
<b>Gene ID</b>	506
<b>Gene Symbol</b>	ATP5F1B
<b>Uniprot ID</b>	ATPB_HUMAN
<b>Immunogen</b>	A synthetic peptide of human ATPB
<b>Immunogen Region</b>	151-164 aa
<b>Specificity</b>	
<b>Immunogen Sequence</b>	



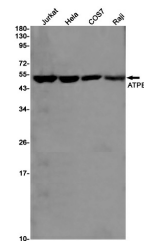
Immunocytochemistry analysis of ATPB (green) in HeLa using ATPB antibody, and DAPI (blue).



Immunohistochemistry analysis of paraffin-embedded Human tonsil using ATPB antibody. High-pressure and temperature Sodium Citrate pH 6.0 was used for antigen retrieval.



Western blot analysis of ATPB in mouse heart, rat heart lysates using ATPB antibody.



Western blot analysis of ATPB in Jurkat, HeLa, COS7, Raji lysates using ATPB antibody.