

Anti-ARPC2 antibody (282-300 aa) [R04-1B6] (STJA0010984)

STJA0010984

GENERAL INFORMATION

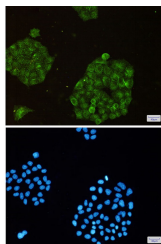
Product Type	Primary antibodies
Short Description	Rabbit monoclonal antibody anti-ARPC2 (282-300 aa) is suitable for use in Western Blot, Immunohistochemistry, Immunocytochemistry, Immunofluorescence and Immunoprecipitation research applications.
Applications	WB/IHC-F/IHC-P/ICC/IF/IP
Host/Source	Rabbit
Reactivity	Human/Mouse/Rat

PRODUCT PROPERTIES

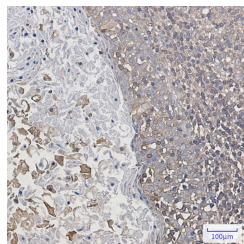
Clonality	Monoclonal
Clone ID	R04-1B6
Concentration	0.3 mg/ml
Conjugation	Unconjugated
Purification	Affinity Purified
Dilution	WB 1:500-1:1000
Range	IHC 1:50-1:100 IF 1:50-1:200 IP 1:20
Formulation	50mM Tris-Glycine (pH7.4) , 0.15M NaCl, 40% Glycerol, 0.01% Sodium azide and 0.05% BSA
Isotype	IgG
Storage Instruction	Store at 4°C short term. Aliquot and store at -20°C long term. Avoid freeze/thaw cycles.

TARGET INFORMATION

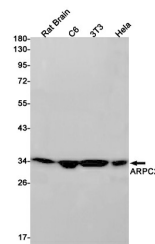
Gene ID	10109
Gene Symbol	ARPC2
Uniprot ID	ARPC2_HUMAN
Immunogen	A synthetic peptide of human ARPC2
Immunogen Region	282-300 aa
Specificity	Immunogen
Sequence	



Immunocytochemistry analysis of ARPC2 (green) in HeLa using ARPC2 antibody, and DAPI (blue)



Immunohistochemistry analysis of paraffin-embedded Human tonsil using ARPC2 antibody. High-pressure and temperature Sodium Citrate pH 6.0 was used for antigen retrieval.



Western blot analysis of ARPC2 in rat Brain, C6, 3T3, HeLa lysates using ARPC2 antibody.