

## Anti-ACTR3 antibody (394-407 aa) [R08-2A2] (STJA0010983)

STJA0010983

### GENERAL INFORMATION

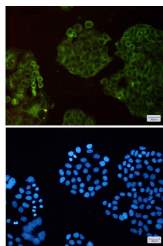
<b>Product Type</b>	Primary antibodies
<b>Short Description</b>	Rabbit monoclonal antibody anti-Actin Related Protein 3 (394-407 aa) is suitable for use in Western Blot, Immunohistochemistry, Immunocytochemistry and Immunofluorescence research applications.
<b>Applications</b>	WB/IHC-F/IHC-P/ICC/IF
<b>Host/Source</b>	Rabbit
<b>Reactivity</b>	Human/Mouse/Rat

### PRODUCT PROPERTIES

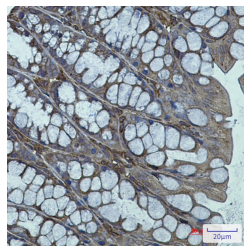
<b>Clonality</b>	Monoclonal
<b>Clone ID</b>	R08-2A2
<b>Concentration</b>	0.3 mg/ml
<b>Conjugation</b>	Unconjugated
<b>Purification</b>	Affinity Purified
<b>Dilution</b>	WB 1:500-1:1000
<b>Range</b>	IHC 1:50-1:100 IF 1:50-1:200
<b>Formulation</b>	50mM Tris-Glycine (pH7.4) , 0.15M NaCl, 40% Glycerol, 0.01% Sodium azide and 0.05% BSA
<b>Isotype</b>	IgG
<b>Storage</b>	Store at 4°C short term. Aliquot and store at -20°C long term. Avoid freeze/thaw cycles.
<b>Instruction</b>	

### TARGET INFORMATION

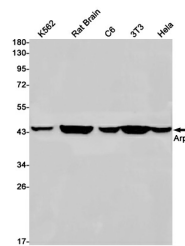
<b>Gene ID</b>	10096
<b>Gene Symbol</b>	ACTR3
<b>Uniprot ID</b>	ARP3_HUMAN
<b>Immunogen</b>	A synthetic peptide of human Arp3
<b>Immunogen Region</b>	394-407 aa
<b>Specificity</b>	
<b>Immunogen Sequence</b>	



Immunocytochemistry analysis of Arp3 (green) in HeLa cells using Arp3 antibody, and DAPI (blue)



Immunohistochemistry analysis of paraffin-embedded mouse colon using Actin Related Protein 3 antibody. High-pressure and temperature Sodium Citrate pH 6.0 was used for antigen retrieval.



Western blot analysis of Arp3 in K562, rat Brain, C6, 3T3, HeLa lysates using Arp3 antibody.

This product is suitable for in-vitro studies under the RESEARCH USE ONLY [RUO] licence. This product must not be used as for diagnostic or other medical purposes.  
St John's Laboratory Ltd, Knowledge Dock Business Centre, University Way, London, E16 2RD | Tel: 0208 223 3081