

Anti-ALDH7A1 antibody (16-29 aa) [R01-9D6] (STJA0010929)

STJA0010929

GENERAL INFORMATION

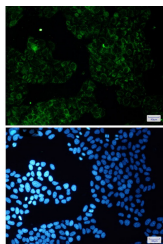
Product Type	Primary antibodies
Short Description	Rabbit monoclonal antibody anti-ALDH7A1 (16-29 aa) is suitable for use in Western Blot, Immunocytochemistry, Immunofluorescence and Immunoprecipitation research applications.
Applications	WB/ICC/IF/IP
Host/Source	Rabbit
Reactivity	Human/Mouse

PRODUCT PROPERTIES

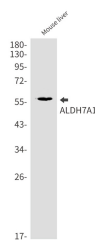
Clonality	Monoclonal
Clone ID	R01-9D6
Concentration	0.3 mg/ml
Conjugation	Unconjugated
Purification	Affinity Purified
Dilution Range	WB 1:500-1:1000 IF 1:50-1:200 IP 1:20
Formulation	50mM Tris-Glycine (pH7.4) , 0.15M NaCl, 40% Glycerol, 0.01% Sodium azide and 0.05% BSA
Isotype	IgG
Storage Instruction	Store at 4°C short term. Aliquot and store at -20°C long term. Avoid freeze/thaw cycles.

TARGET INFORMATION

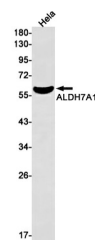
Gene ID	501
Gene Symbol	ALDH7A1
Uniprot ID	AL7A1_HUMAN
Immunogen	A synthetic peptide of human ALDH7A1
Immunogen Region	16-29 aa
Specificity	
Immunogen Sequence	



Immunocytochemistry analysis of ALDH7A1 (green) in HeLa using ALDH7A1 antibody, and DAPI (blue)



Western blot analysis of ALDH7A1 in mouse liver lysates using ALDH7A1 antibody.



Western blot analysis of ALDH7A1 in HeLa lysates using ALDH7A1 antibody.

This product is suitable for in-vitro studies under the RESEARCH USE ONLY [RUO] licence. This product must not be used as for diagnostic or other medical purposes.
St John's Laboratory Ltd, Knowledge Dock Business Centre, University Way, London, E16 2RD | Tel: 0208 223 3081