

Anti-APP antibody (66-82 aa) [R09-3F7] (STJA0010881)

STJA0010881

GENERAL INFORMATION

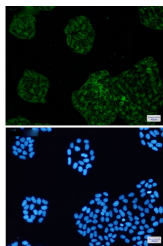
Product Type	Primary antibodies
Short Description	Rabbit monoclonal antibody anti-Amyloid Precursor Protein (66-82 aa) is suitable for use in Western Blot, Immunohistochemistry, Immunocytochemistry and Immunofluorescence research applications.
Applications	WB/IHC-F/IHC-P/ICC/IF
Host/Source	Rabbit
Reactivity	Human/Mouse/Rat

PRODUCT PROPERTIES

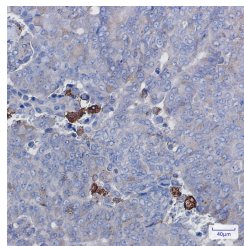
Clonality	Monoclonal
Clone ID	R09-3F7
Concentration	0.3 mg/ml
Conjugation	Unconjugated
Purification	Affinity Purified
Dilution	WB 1:500-1:1000
Range	IHC 1:50-1:100 IF 1:50-1:200
Formulation	50mM Tris-Glycine (pH7.4) , 0.15M NaCl, 40% Glycerol, 0.01% Sodium azide and 0.05% BSA
Isotype	IgG
Storage Instruction	Store at 4°C short term. Aliquot and store at -20°C long term. Avoid freeze/thaw cycles.

TARGET INFORMATION

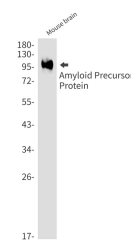
Gene ID	351
Gene Symbol	APP
Uniprot ID	A4_HUMAN
Immunogen	A synthetic peptide of human Amyloid Precursor Protein
Immunogen Region	66-82 aa
Specificity	
Immunogen Sequence	



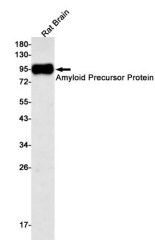
Immunocytochemistry analysis of Amyloid Precursor Protein (green) in HeLa using Amyloid Precursor Protein antibody, and DAPI (blue).



Immunohistochemistry analysis of paraffin-embedded Human breast cancer using Amyloid Precursor Protein antibody. High-pressure and temperature Sodium Citrate pH 6.0 was used for antigen retrieval.



Western blot analysis of Amyloid Precursor Protein in mouse brain lysates using Amyloid Precursor Protein antibody.



Western blot analysis of Amyloid Precursor Protein in rat Brain lysates using Amyloid Precursor Protein antibody.

This product is suitable for in-vitro studies under the RESEARCH USE ONLY [RUO] licence. This product must not be used as for diagnostic or other medical purposes.
St John's Laboratory Ltd, Knowledge Dock Business Centre, University Way, London, E16 2RD | Tel: 0208 223 3081