

Anti-ARPC5 antibody (2-20 aa) [R08-2B3] (STJA0010829)

STJA0010829

GENERAL INFORMATION

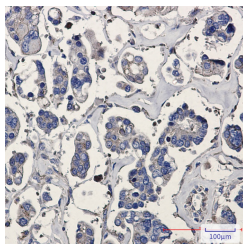
Product Type	Primary antibodies
Short Description	Rabbit monoclonal antibody anti-p16 ARC (2-20 aa) is suitable for use in Western Blot, Immunohistochemistry and Immunoprecipitation research applications.
Applications	WB/IHC-P/IP
Host/Source	Rabbit
Reactivity	Human/Mouse/Rat

PRODUCT PROPERTIES

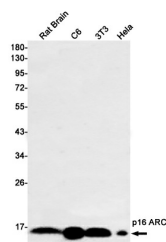
Clonality	Monoclonal
Clone ID	R08-2B3
Concentration	0.3 mg/ml
Conjugation	Unconjugated
Purification	Affinity Purified
Dilution Range	WB 1:500-1:1000 IHC 1:50-1:100 IP 1:20
Formulation	50mM Tris-Glycine (pH7.4) , 0.15M NaCl, 40% Glycerol, 0.01% Sodium azide and 0.05% BSA
Isotype	IgG
Storage	Store at 4°C short term. Aliquot and store at -20°C long term. Avoid freeze/thaw cycles.
Instruction	

TARGET INFORMATION

Gene ID	10092
Gene Symbol	ARPC5
Uniprot ID	ARPC5_HUMAN
Immunogen	A synthetic peptide of human p16 ARC
Immunogen Region	2-20 aa
Specificity	
Immunogen Sequence	



Immunohistochemistry analysis of paraffin-embedded Human Cholangiocarcinoma using p16 ARC antibody. High-pressure and temperature Sodium Citrate pH 6.0 was used for antigen retrieval.



Western blot analysis of p16 ARC in rat Brain, C6, 3T3, HeLa lysates using p16 ARC antibody.