

## Anti-GYPC antibody (109-128 aa) [R04-8F4] (STJA0010780)

STJA0010780

### GENERAL INFORMATION

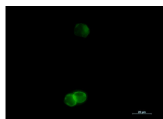
<b>Product Type</b>	Primary antibodies
<b>Short Description</b>	Rabbit monoclonal antibody anti-Glycophorin C (109-128 aa) is suitable for use in Western Blot, Immunocytochemistry, Immunofluorescence and Immunoprecipitation research applications.
<b>Applications</b>	WB/ICC/IF/IP
<b>Host/Source</b>	Rabbit
<b>Reactivity</b>	Human

### PRODUCT PROPERTIES

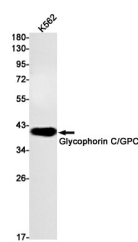
<b>Clonality</b>	Monoclonal
<b>Clone ID</b>	R04-8F4
<b>Concentration</b>	0.3 mg/ml
<b>Conjugation</b>	Unconjugated
<b>Purification</b>	Affinity Purified
<b>Dilution Range</b>	WB 1:500-1:1000 IF 1:50-1:200 IP 1:20
<b>Formulation</b>	50mM Tris-Glycine (pH7.4) , 0.15M NaCl, 40% Glycerol, 0.01% Sodium azide and 0.05% BSA
<b>Isotype</b>	IgG
<b>Storage</b>	Store at 4°C short term. Aliquot and store at -20°C long term. Avoid freeze/thaw cycles.
<b>Instruction</b>	

### TARGET INFORMATION

<b>Gene ID</b>	2995
<b>Gene Symbol</b>	GYPC
<b>Uniprot ID</b>	GLPC_HUMAN
<b>Immunogen</b>	A synthetic peptide of human Glycophorin C
<b>Immunogen Region</b>	109-128 aa
<b>Specificity</b>	
<b>Immunogen Sequence</b>	



Immunocytochemistry analysis of Glycophorin C (green) in K562 using Glycophorin C antibody, and DAPI (blue).



Western blot analysis of Glycophorin C/GPC in K562 lysates using Glycophorin C/GPC antibody.

This product is suitable for in-vitro studies under the RESEARCH USE ONLY [RUO] licence. This product must not be used as for diagnostic or other medical purposes.  
St John's Laboratory Ltd, Knowledge Dock Business Centre, University Way, London, E16 2RD | Tel: 0208 223 3081