

## Anti-COPS8 antibody (189-202 aa) [R05-6D7] (STJA0010743)

STJA0010743

### GENERAL INFORMATION

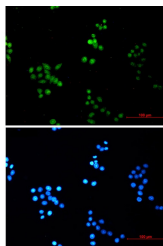
<b>Product Type</b>	Primary antibodies
<b>Short Description</b>	Rabbit monoclonal antibody anti-COPS8 (189-202 aa) is suitable for use in Western Blot, Immunohistochemistry, Immunocytochemistry, Immunofluorescence and Immunoprecipitation research applications.
<b>Applications</b>	WB/IHC-F/IHC-P/ICC/IF/IP
<b>Host/Source</b>	Rabbit
<b>Reactivity</b>	Human/Mouse/Rat

### PRODUCT PROPERTIES

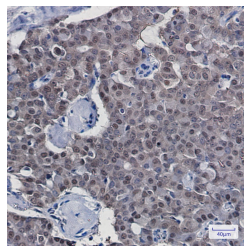
<b>Clonality</b>	Monoclonal
<b>Clone ID</b>	R05-6D7
<b>Concentration</b>	0.3 mg/ml
<b>Conjugation</b>	Unconjugated
<b>Purification</b>	Affinity Purified
<b>Dilution</b>	WB 1:500-1:1000
<b>Range</b>	IHC 1:50-1:100 IF 1:50-1:200 IP 1:20
<b>Formulation</b>	50mM Tris-Glycine (pH7.4) , 0.15M NaCl, 40% Glycerol, 0.01% Sodium azide and 0.05% BSA
<b>Isotype</b>	IgG
<b>Storage Instruction</b>	Store at 4°C short term. Aliquot and store at -20°C long term. Avoid freeze/thaw cycles.

### TARGET INFORMATION

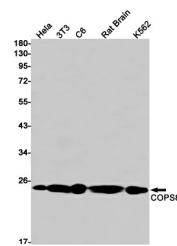
<b>Gene ID</b>	10920
<b>Gene Symbol</b>	COPS8
<b>Uniprot ID</b>	CSN8_HUMAN
<b>Immunogen</b>	A synthetic peptide of human COPS8
<b>Immunogen Region</b>	189-202 aa
<b>Specificity</b>	
<b>Immunogen Sequence</b>	



Immunocytochemistry analysis of COPS8 (green) in HeLa using COPS8 antibody, and DAPI (blue).



Immunohistochemistry analysis of paraffin-embedded Human breast cancer tissue using COPS8 antibody. High-pressure and temperature Sodium Citrate pH 6.0 was used for antigen retrieval.



Western blot analysis of COPS8 in HeLa, 3T3, C6, rat Brain, K562 lysates using COPS8 antibody.

This product is suitable for in-vitro studies under the RESEARCH USE ONLY [RUO] licence. This product must not be used as for diagnostic or other medical purposes.  
St John's Laboratory Ltd, Knowledge Dock Business Centre, University Way, London, E16 2RD | Tel: 0208 223 3081