

Anti-Recombinant-NSE antibody [SM0664] (STJA0010664)

STJA0010664

GENERAL INFORMATION

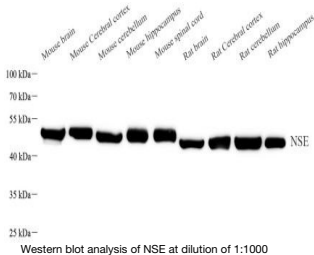
| | |
|--------------------------|---|
| Product Type | Primary antibodies |
| Short Description | Mouse monoclonal antibody anti-Recombinant-NSE is suitable for use in Western Blot research applications. |
| Applications | WB |
| Host/Source | Mouse |
| Reactivity | Human/Mouse/Rat |

PRODUCT PROPERTIES

| | |
|----------------------------|--|
| Clonality | Monoclonal |
| Clone ID | SM0664 |
| Concentration | |
| Conjugation | Unconjugated |
| Purification | Affinity purification |
| Dilution Range | WB (H, M, R) 1:1000-1:2000 |
| Formulation | PBS with 0.15% ProClin300, 100 Mu g/mL BSA and 50% glycerol. |
| Isotype | IgG |
| Storage Instruction | Store at -20C for up to one year, and avoid repeated freeze-thaw cycles. |

TARGET INFORMATION

| | |
|---------------------------|---|
| Gene ID | 13807 |
| Gene Symbol | Eno2 |
| Uniprot ID | ENO2_MOUSE |
| Immunogen | KLH conjugated Synthetic peptide corresponding to Mouse NSE |
| Immunogen Region | |
| Specificity | |
| Immunogen Sequence | |



This product is suitable for in-vitro studies under the RESEARCH USE ONLY [RUO] licence. This product must not be used as for diagnostic or other medical purposes.
St John's Laboratory Ltd, Knowledge Dock Business Centre, University Way, London, E16 2RD | Tel: 0208 223 3081