

Anti-Recombinant-Phospho-p38-T180/Y182 antibody [SR0657] (STJA0010657)

STJA0010657

GENERAL INFORMATION

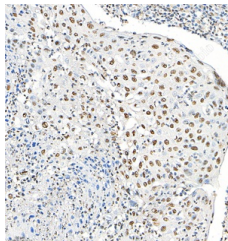
Product Type	Primary antibodies
Short Description	Rabbit monoclonal antibody anti-Recombinant-Phospho-p38-T180/Y182 is suitable for use in Western Blot, Immunohistochemistry and Immunofluorescence research applications.
Applications	WB/IHC/IF
Host/Source	Rabbit
Reactivity	Human/Mouse/Rat

PRODUCT PROPERTIES

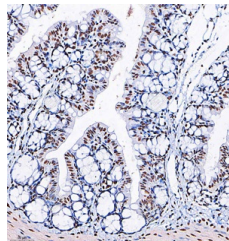
Clonality	Monoclonal
Clone ID	SR0657
Concentration	
Conjugation	Unconjugated
Purification	Affinity purification
Dilution Range	WB (H, M, R) 1:1000-1:2000 IHC/IF (H, M, R) 1:500-1:1000
Formulation	PBS with 0.15% ProClin300, 100 µg/mL BSA and 50% glycerol.
Isotype	IgG
Storage	Store at -20°C for up to one year, and avoid repeated freeze-thaw cycles.
Instruction	

TARGET INFORMATION

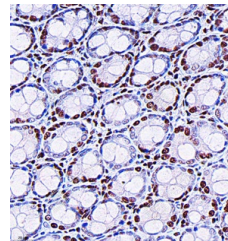
Gene ID	1432
Gene Symbol	MAPK14
Uniprot ID	MK14_HUMAN
Immunogen	KLH conjugated Synthetic phosphopeptide corresponding to Human p-p38 (Thr180/Tyr182)
Immunogen Region	
Specificity	
Immunogen Sequence	



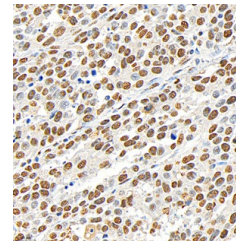
Immunohistochemistry analysis of P-P38. Sample: Human cervical carcinoma, 4% PFA 12-24h. Antigen retrieval: Citrate buffer, pressure cooker 2min. Primary antibody: 1:500, 4°C overnight. Secondary antibody: HRP conjugated Goat Anti-Rabbit IgG, 1:200, RT, 1h.



Immunohistochemistry analysis of P-P38. Sample: mouse small intestine, 4% PFA 12-24h. Antigen retrieval: Citrate buffer, pressure cooker 2min. Primary antibody: 1:500, 4°C overnight. Secondary antibody: HRP conjugated Goat Anti-Rabbit IgG, 1:200, RT, 1h.



Immunohistochemistry analysis of P-P38. Sample: Rat colon, 4% PFA 12-24h. Antigen retrieval: Citrate buffer, pressure cooker 2min. Primary antibody: 1:500, 4°C overnight. Secondary antibody: HRP conjugated Goat Anti-Rabbit IgG, 1:200, RT, 1h.



Immunohistochemistry analysis of P-P38. Sample: Human gastric carcinoma, 4% PFA 12-24h. Antigen retrieval: Citrate buffer, pressure cooker 2min. Primary antibody: 1:500, 4°C overnight. Secondary antibody: HRP conjugated Goat Anti-Rabbit IgG, 1:200, RT, 1h.

This product is suitable for in-vitro studies under the RESEARCH USE ONLY [RUO] licence. This product must not be used as for diagnostic or other medical purposes.
St John's Laboratory Ltd, Knowledge Dock Business Centre, University Way, London, E16 2RD | Tel: 0208 223 3081