

## Anti-Recombinant-Lamin A + Lamin C antibody [SM0637] (STJA0010637)

STJA0010637

### GENERAL INFORMATION

<b>Product Type</b>	Primary antibodies
<b>Short Description</b>	Mouse monoclonal antibody anti-Recombinant-Lamin A + Lamin C is suitable for use in Western Blot, Immunohistochemistry and Immunofluorescence research applications.
<b>Applications</b>	WB/IHC/IF
<b>Host/Source</b>	Mouse
<b>Reactivity</b>	Human/Mouse/Rat

### PRODUCT PROPERTIES

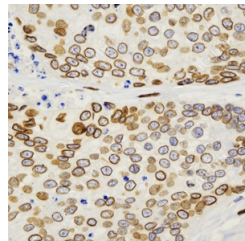
<b>Clonality</b>	Monoclonal
<b>Clone ID</b>	SM0637
<b>Concentration</b>	
<b>Conjugation</b>	Unconjugated
<b>Purification</b>	Affinity purification
<b>Dilution Range</b>	WB (H, M, R) 1:1000-1:2000 IHC/IF (H, M, R) 1:500-1:2000
<b>Formulation</b>	PBS with 0.15% ProClin300, 100 µg/mL BSA and 50% glycerol.
<b>Isotype</b>	IgG1
<b>Storage</b>	Store at -20°C for up to one year, and avoid repeated freeze-thaw cycles.
<b>Instruction</b>	

### TARGET INFORMATION

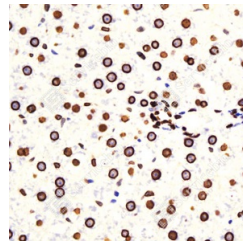
<b>Gene ID</b>	16905
<b>Gene Symbol</b>	Lmna
<b>Uniprot ID</b>	LMNA_MOUSE
<b>Immunogen</b>	KLH conjugated Synthetic peptide corresponding to Mouse Lamin A + Lamin C
<b>Immunogen Region</b>	
<b>Specificity</b>	
<b>Immunogen Sequence</b>	



Western blot analysis of Lamin A + Lamin C. Sample: Protein treated by RIPA Lysis Buffer. Blocking buffer: 3% Nonfat dry milk in TBST, RT, 1h. Primary antibody: 1:2000, 4°C overnight. Secondary antibody: HRP conjugated Goat Anti-mouse IgG, 1:3000, RT, 1h.



Immunohistochemistry analysis of Lamin A + Lamin C. Sample: Human esophageal carcinoma, 4% PFA 12-24h. Antigen retrieval: Citrate buffer, pressure cooker 2min. Primary antibody: 1:1000, 4°C overnight. Secondary antibody: HRP conjugated Goat Anti-mouse IgG, 1:200, RT, 1h.



Immunohistochemistry analysis of Lamin A + Lamin C. Sample: Rat liver, 4% PFA 12-24h. Antigen retrieval: Citrate buffer, pressure cooker 2min. Primary antibody: 1:1000, 4°C overnight. Secondary antibody: HRP conjugated Goat Anti-mouse IgG, 1:200, RT, 1h.

This product is suitable for in-vitro studies under the RESEARCH USE ONLY [RUO] licence. This product must not be used as for diagnostic or other medical purposes.  
St John's Laboratory Ltd, Knowledge Dock Business Centre, University Way, London, E16 2RD | Tel: 0208 223 3081