

Anti-Recombinant-Cytokeratin 18 antibody [SM0636] (STJA0010636)

STJA0010636

GENERAL INFORMATION

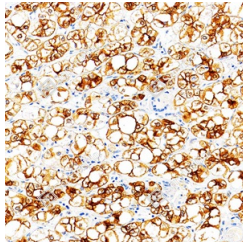
Product Type	Primary antibodies
Short Description	Mouse monoclonal antibody anti-Recombinant-Cytokeratin 18 is suitable for use in Western Blot, Immunohistochemistry and Immunofluorescence research applications.
Applications	WB/IHC/IF
Host/Source	Mouse
Reactivity	Human/Mouse/Rat

PRODUCT PROPERTIES

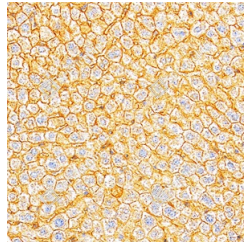
Clonality	Monoclonal
Clone ID	SM0636
Concentration	
Conjugation	Unconjugated
Purification	Affinity purification
Dilution Range	WB (H, M, R) 1:500-1:1000 IHC/IF (H, M, R) 1:500-1:1000
Formulation	PBS with 0.15% ProClin300, 100 Mu g/mL BSA and 50% glycerol.
Isotype	IgG1
Storage	Store at -20C for up to one year, and avoid repeated freeze-thaw cycles.
Instruction	

TARGET INFORMATION

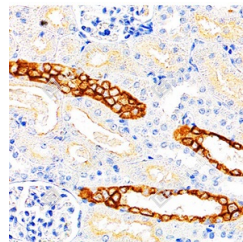
Gene ID	3875
Gene Symbol	KRT18
Uniprot ID	K1C18_HUMAN
Immunogen	KLH conjugated Synthetic peptide corresponding to Human Cytokeratin 18
Immunogen Region	
Specificity	
Immunogen Sequence	



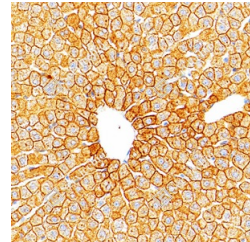
Immunohistochemistry analysis of Cytokeratin 18. Sample: Human liver cancer, 4% PFA 12-24h. Antigen retrieval: Citrate buffer, pressure cooker 2 min. Primary antibody: 1:500, 4C overnight. Secondary antibody: S-vision poly-HRP conjugated Goat Anti-mouse IgG, Ready to use, RT, 20min.



Immunohistochemistry analysis of Cytokeratin 18. Sample: mouse liver, 4% PFA 12-24h. Antigen retrieval: Citrate buffer, pressure cooker 2 min. Primary antibody: 1:500, 4C overnight. Secondary antibody: S-vision poly-HRP conjugated Goat Anti-mouse IgG, Ready to use, RT, 20min.



Immunohistochemistry analysis of Cytokeratin 18. Sample: Rat kidney, 4% PFA 12-24h. Antigen retrieval: Citrate buffer, pressure cooker 2 min. Primary antibody: 1:500, 4C overnight. Secondary antibody: S-vision poly-HRP conjugated Goat Anti-mouse IgG, Ready to use, RT, 20min.



Immunohistochemistry analysis of Cytokeratin 18. Sample: Rat liver, 4% PFA 12-24h. Antigen retrieval: Citrate buffer, pressure cooker 2 min. Primary antibody: 1:500, 4C overnight. Secondary antibody: S-vision poly-HRP conjugated Goat Anti-mouse IgG, Ready to use, RT, 20min.

This product is suitable for in-vitro studies under the RESEARCH USE ONLY [RUO] licence. This product must not be used as for diagnostic or other medical purposes.
St John's Laboratory Ltd, Knowledge Dock Business Centre, University Way, London, E16 2RD | Tel: 0208 223 3081