

Anti-Recombinant-alpha Tubulin antibody [SR0621] (STJA0010621)

STJA0010621

GENERAL INFORMATION

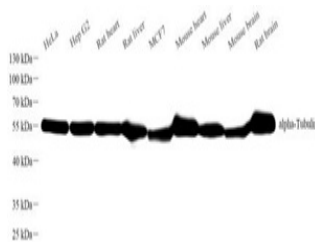
Product Type	Primary antibodies
Short Description	Rabbit monoclonal antibody anti-Recombinant-alpha Tubulin is suitable for use in Western Blot, Immunohistochemistry, Immunofluorescence and Immunocytochemistry research applications.
Applications	WB/IHC/IF/ICC
Host/Source	Rabbit
Reactivity	Human/Mouse/Rat

PRODUCT PROPERTIES

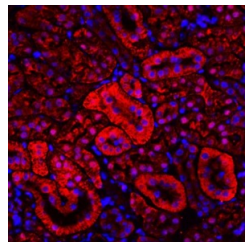
Clonality	Monoclonal
Clone ID	SR0621
Concentration	
Conjugation	Unconjugated
Purification	Affinity purification
Dilution Range	WB (H, M, R) 1:2000-1:4000 IHC/IF (H, M, R) 1:2000-1:4000 ICC/IF (H, M, R) 1:2000-1:4000
Formulation	PBS with 0.15% ProClin300, 100 Mu g/mL BSA and 50% glycerol.
Isotype	IgG
Storage Instruction	Store at -20C for up to one year, and avoid repeated freeze-thaw cycles.

TARGET INFORMATION

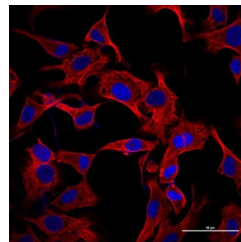
Gene ID	7277
Gene Symbol	TUBA4A
Uniprot ID	TBA4A_HUMAN
Immunogen	
Immunogen Region	
Specificity	
Immunogen Sequence	



Western blot analysis of Alpha-Tubulin at dilution of 1:2000



Immunofluorescence analysis of paraffin embedded mouse kidney using Alpha-Tubulin at dilution of 1:1000



Immunocytochemistry analysis of 4% paraformaldehyde-fixed HeLa cells using Alpha-Tubulin at dilution of 1:1000

This product is suitable for in-vitro studies under the RESEARCH USE ONLY [RUO] licence. This product must not be used as for diagnostic or other medical purposes.
St John's Laboratory Ltd, Knowledge Dock Business Centre, University Way, London, E16 2RD | Tel: 0208 223 3081