

Anti-Recombinant-beta Tubulin antibody [SM0602] (STJA0010602)

STJA0010602

GENERAL INFORMATION

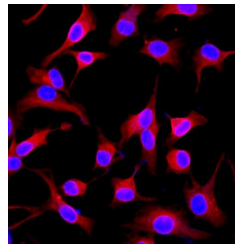
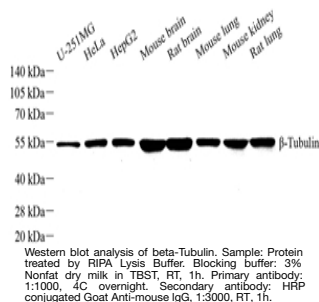
Product Type	Primary antibodies
Short Description	Mouse monoclonal antibody anti-Recombinant-beta Tubulin is suitable for use in Western Blot, Immunocytochemistry and Immunofluorescence research applications.
Applications	WB/ICC/IF
Host/Source	Mouse
Reactivity	Human/Mouse/Rat

PRODUCT PROPERTIES

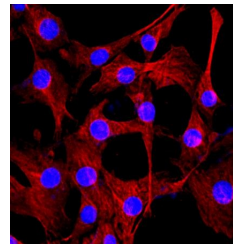
Clonality	Monoclonal
Clone ID	SM0602
Concentration	
Conjugation	Unconjugated
Purification	Affinity purification
Dilution Range	WB (H, M, R) 1:1000-1:2000 ICC/IF (H, M, R) 1:800-1:1600
Formulation	PBS with 0.15% ProClin300, 100 Mu g/mL BSA and 50% glycerol.
Isotype	IgG
Storage	Store at -20C for up to one year, and avoid repeated freeze-thaw cycles.
Instruction	

TARGET INFORMATION

Gene ID	203068
Gene Symbol	TUBB
Uniprot ID	TBB5_HUMAN
Immunogen	Recombinant protein corresponding to Human beta Tubulin
Immunogen Region	
Specificity	
Immunogen Sequence	



ICC analysis of beta-Tubulin. Sample: HeLa, 4% PFA 20min. Blocking buffer: Blocking buffer: 3% BSA in PBS, RT, 30min. Primary antibody: 1:1000, 4C overnight. Secondary antibody: Cy3 conjugated Goat Anti-mouse IgG, 1:300, RT, 1h.



ICC analysis of beta-Tubulin. Sample: NIH3T3, 4% PFA 20min. Blocking buffer: Blocking buffer: 3% BSA in PBS, RT, 30min. Primary antibody: 1:1000, 4C overnight. Secondary antibody: Cy3 conjugated Goat Anti-mouse IgG, 1:300, RT, 1h.

This product is suitable for in-vitro studies under the RESEARCH USE ONLY [RUO] licence. This product must not be used as for diagnostic or other medical purposes.
St John's Laboratory Ltd, Knowledge Dock Business Centre, University Way, London, E16 2RD | Tel: 0208 223 3081