

Anti-Recombinant-smooth muscle Myosin heavy chain 11 antibody [SR0540] (STJA0010540)

STJA0010540

GENERAL INFORMATION

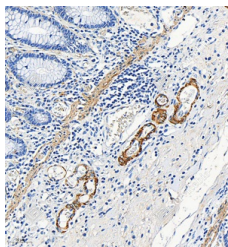
Product Type	Primary antibodies
Short Description	Rabbit monoclonal antibody anti-Recombinant-smooth muscle Myosin heavy chain 11 is suitable for use in Western Blot, Immunohistochemistry and Immunofluorescence research applications.
Applications	WB/IHC/IF
Host/Source	Rabbit
Reactivity	Mouse/Rat

PRODUCT PROPERTIES

Clonality	Monoclonal
Clone ID	SR0540
Concentration	
Conjugation	Unconjugated
Purification	Affinity purification
Dilution Range	WB (M, R) 1:500-1:1000 IHC/IF (H, M, R) 1:500-1:2000
Formulation	PBS with 0.15% ProClin300, 100 Mu g/mL BSA and 50% glycerol.
Isotype	IgG
Storage	Store at -20C for up to one year, and avoid repeated freeze-thaw cycles.
Instruction	

TARGET INFORMATION

Gene ID	
Gene Symbol	Myh11
Uniprot ID	MYH11_MOUSE
Immunogen	Recombinant protein corresponding to Mouse Myh11
Immunogen Region	
Specificity	
Immunogen Sequence	



Immunohistochemistry analysis of smooth muscle Myosin heavy chain 11. Sample: Human colon, 4% PFA 12-24h. Antigen retrieval: Citrate buffer, pressure cooker 2min. Primary antibody: 1:1000, 4C overnight. Secondary antibody: HRP conjugated Goat Anti-Rabbit IgG, 1:200, RT, 1h.

This product is suitable for in-vitro studies under the RESEARCH USE ONLY [RUO] licence. This product must not be used as for diagnostic or other medical purposes.
St John's Laboratory Ltd, Knowledge Dock Business Centre, University Way, London, E16 2RD | Tel: 0208 223 3081