

## Anti-p21 antibody [SR0522] (STJA0010522)

STJA0010522

### GENERAL INFORMATION

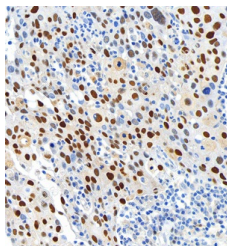
<b>Product Type</b>	Primary antibodies
<b>Short Description</b>	Rabbit monoclonal antibody anti-p21 is suitable for use in Immunohistochemistry and Immunofluorescence research applications.
<b>Applications</b>	IHC/IF
<b>Host/Source</b>	Rabbit
<b>Reactivity</b>	Human/Mouse/Rat

### PRODUCT PROPERTIES

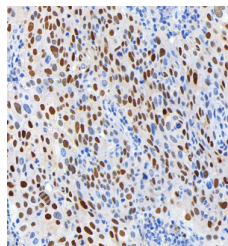
<b>Clonality</b>	Monoclonal
<b>Clone ID</b>	SR0522
<b>Concentration</b>	
<b>Conjugation</b>	Unconjugated
<b>Purification</b>	The antibody was affinity-purified from mouse ascites by affinity-chromatography using specific immunogen.
<b>Dilution Range</b>	IHC/IF (H, M, R) 1:200-1:600
<b>Formulation</b>	Liquid in PBS containing 50% glycerol, 0.5% BSA and 0.02% sodium azide.
<b>Isotype</b>	
<b>Storage Instruction</b>	Store at 20C for up to one year, and avoid repeated freeze-thaw cycles.

### TARGET INFORMATION

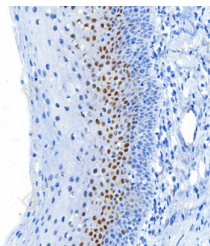
<b>Gene ID</b>	1026
<b>Gene Symbol</b>	CDKN1A
<b>Uniprot ID</b>	CDN1A_HUMAN
<b>Immunogen</b>	
<b>Immunogen Region</b>	
<b>Specificity</b>	
<b>Immunogen Sequence</b>	



Immunohistochemistry analysis of p21. Sample: Human cervical carcinoma, 4% PFA 12-24h. Antigen retrieval: Citrate buffer, pressure cooker 2 min. Primary antibody: 1:600, 4C overnight. Secondary antibody: S-vision poly-  
HRP conjugated Goat Anti-Rabbit IgG, Ready to use, RT, 20min.



Immunohistochemistry analysis of p21. Sample: Human cervical carcinoma, 4% PFA 12-24h. Antigen retrieval: Citrate buffer, pressure cooker 2 min. Primary antibody: 1:600, 4C overnight. Secondary antibody: S-vision poly-  
HRP conjugated Goat Anti-Rabbit IgG, Ready to use, RT, 20min.



Immunohistochemistry analysis of p21. Sample: Human tonsil, 4% PFA 12-24h. Antigen retrieval: Citrate buffer, pressure cooker 2 min. Primary antibody: 1:600, 4C overnight. Secondary antibody: S-vision poly-  
HRP conjugated Goat Anti-Rabbit IgG, Ready to use, RT, 20min.

This product is suitable for in-vitro studies under the RESEARCH USE ONLY [RUO] licence. This product must not be used as for diagnostic or other medical purposes.  
St John's Laboratory Ltd, Knowledge Dock Business Centre, University Way, London, E16 2RD | Tel: 0208 223 3081