

Anti-CREB antibody [SM0516] (STJA0010516)

STJA0010516

GENERAL INFORMATION

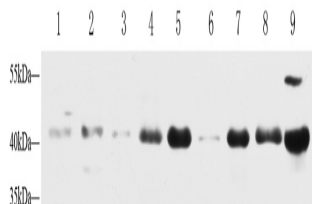
Product Type	Primary antibodies
Short Description	Mouse monoclonal antibody anti-CREB is suitable for use in Western Blot research applications.
Applications	WB
Host/Source	Mouse
Reactivity	Human/Mouse/Rat

PRODUCT PROPERTIES

Clonality	Monoclonal
Clone ID	SM0516
Concentration	
Conjugation	Unconjugated
Purification	Affinity purification
Dilution Range	WB (H, M, R) 1:500-1:1000
Formulation	PBS with 0.02% sodium azide, 100 Mu g/ml BSA and 50% glycerol.
Isotype	IgG
Storage Instruction	Store at -20C for up to one year, and avoid repeated freeze-thaw cycles.

TARGET INFORMATION

Gene ID	1385
Gene Symbol	CREB1
Uniprot ID	CREB1_HUMAN
Immunogen	KLH conjugated Synthetic peptide corresponding to Human CREB-1.
Immunogen Region	
Specificity	
Immunogen Sequence	



Western blot analysis of CREB at dilution of 1:1000.
 Lane 1: HeLa cell lysate Lane 2: HepG2 cell lysate Lane 3: NIH3T3 cell lysate Lane 4: mouse spleen tissue lysate Lane 5: mouse lung tissue lysate Lane 6: mouse brain tissue lysate Lane 7: Rat spleen tissue lysate Lane 8: Rat lung tissue lysate Lane 9: Rat brain tissue lysate

This product is suitable for in-vitro studies under the RESEARCH USE ONLY [RUO] licence. This product must not be used as for diagnostic or other medical purposes.
 St John's Laboratory Ltd, Knowledge Dock Business Centre, University Way, London, E16 2RD | Tel: 0208 223 3081