

Anti-CD3 antibody [SR0513] (STJA0010513)

STJA0010513

GENERAL INFORMATION

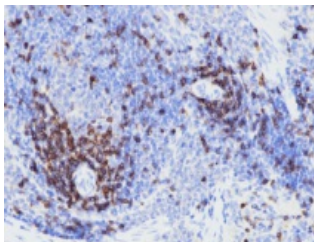
Product Type	Primary antibodies
Short Description	Rabbit monoclonal antibody anti-CD3 is suitable for use in Immunohistochemistry and Immunofluorescence research applications.
Applications	IHC/IF
Host/Source	Rabbit
Reactivity	Human/Mouse/Rat

PRODUCT PROPERTIES

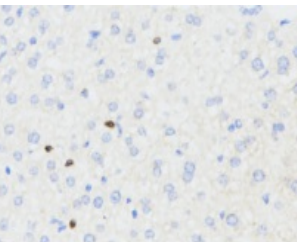
Clonality	Monoclonal
Clone ID	SR0513
Concentration	
Conjugation	Unconjugated
Purification	Affinity purification
Dilution Range	IHC/IF (H, M, R) 1:50-1:200/1:50-1:200
Formulation	PBS with 0.02% sodium azide, 100 Mu g/ml BSA and 50% glycerol.
Isotype	IgG
Storage Instruction	Store at -20C for up to one year, and avoid repeated freeze-thaw cycles.

TARGET INFORMATION

Gene ID	916
Gene Symbol	CD3E
Uniprot ID	CD3E_HUMAN
Immunogen	KLH conjugated Synthetic peptide corresponding to human CD3 epsilon
Immunogen Region	
Specificity	
Immunogen Sequence	



Immunohistochemistry analysis of paraffin-embedded human spleen using CD3 at dilution of 1:100



Immunohistochemistry analysis of paraffin-embedded mouse liver using CD3 at dilution of 1:100

This product is suitable for in-vitro studies under the RESEARCH USE ONLY [RUO] licence. This product must not be used as for diagnostic or other medical purposes.
St John's Laboratory Ltd, Knowledge Dock Business Centre, University Way, London, E16 2RD | Tel: 0208 223 3081