

Anti-Caldesmon antibody [SM0509] (STJA0010509)

STJA0010509

GENERAL INFORMATION

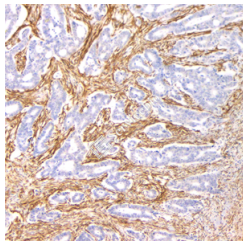
Product Type	Primary antibodies
Short Description	Mouse monoclonal antibody anti-Caldesmon is suitable for use in Western Blot, Immunohistochemistry and Immunofluorescence research applications.
Applications	WB/IHC/IF
Host/Source	Mouse
Reactivity	Human

PRODUCT PROPERTIES

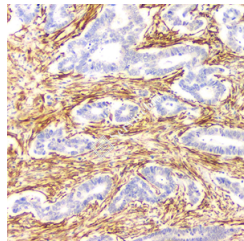
Clonality	Monoclonal
Clone ID	SM0509
Concentration	
Conjugation	Unconjugated
Purification	Affinity purification
Dilution Range	WB (H) 1:500-1:1000 IHC/IF (H) 1:500-1:1500
Formulation	PBS with 0.15% ProClin300, 100 µg/mL BSA and 50% glycerol.
Isotype	IgG
Storage	Store at -20°C for up to one year, and avoid repeated freeze-thaw cycles.
Instruction	

TARGET INFORMATION

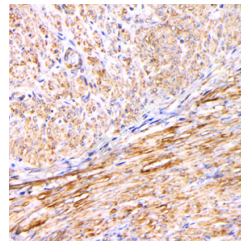
Gene ID	800
Gene Symbol	CALD1
Uniprot ID	CALD1_HUMAN
Immunogen	Recombinant protein corresponding to Human Caldesmon
Immunogen Region	
Specificity	
Immunogen Sequence	



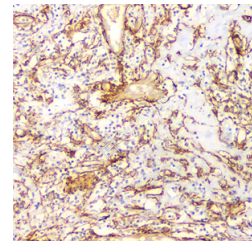
Immunohistochemistry analysis of cladesmon. Sample: Human colon cancer, 4% PFA 12-24h. Antigen retrieval: Citrate buffer, pressure cooker 2min. Blocking buffer: 3% BSA in PBS, RT, 30min. Primary antibody: 1:1000, 4C overnight. Secondary antibody: HRP Goat Anti-mouse IgG, 1:200 RT 1h



Immunohistochemistry analysis of cladesmon. Sample: Human colon cancer, 4% PFA 12-24h. Antigen retrieval: Citrate buffer, pressure cooker 2min. Blocking buffer: 3% BSA in PBS, RT, 30min. Primary antibody: 1:1000, 4C overnight. Secondary antibody: HRP Goat Anti-mouse IgG, 1:200 RT 1h



Immunohistochemistry analysis of cladesmon. Sample: Human endometrial carcinoma, 4% PFA 12-24h. Antigen retrieval: Citrate buffer, pressure cooker 2min. Blocking buffer: 3% BSA in PBS, RT, 30min. Primary antibody: 1:1000, 4C overnight. Secondary antibody: HRP Goat Anti-mouse IgG, 1:200 RT 1h



Immunohistochemistry analysis of cladesmon. Sample: Human breast invasive ductal carcinoma, 4% PFA 12-24h. Antigen retrieval: Citrate buffer, pressure cooker 2min. Blocking buffer: 3% BSA in PBS, RT, 30min. Primary antibody: 1:1000, 4C overnight. Secondary antibody: HRP Goat Anti-mouse IgG, 1:200 RT 1h

This product is suitable for in-vitro studies under the RESEARCH USE ONLY [RUO] licence. This product must not be used as for diagnostic or other medical purposes.
St John's Laboratory Ltd, Knowledge Dock Business Centre, University Way, London, E16 2RD | Tel: 0208 223 3081