

## Anti-METTL3 antibody [SM0492] (STJA0010492)

STJA0010492

### GENERAL INFORMATION

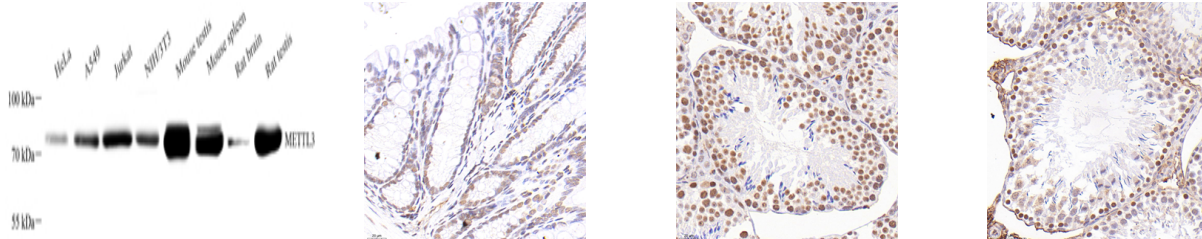
|                          |   |
|--------------------------|---|
| <b>Product Type</b>      | Primary antibodies  |
| <b>Short Description</b> | Mouse monoclonal antibody anti-METTL3 is suitable for use in Western Blot, Immunohistochemistry and Immunofluorescence research applications. |
| <b>Applications</b>      | WB/IHC/IF   |
| <b>Host/Source</b>       | Mouse   |
| <b>Reactivity</b>        | Human/Mouse/Rat   |

### PRODUCT PROPERTIES

|                       |   |
|-----------------------|---|
| <b>Clonality</b>      | Monoclonal  |
| <b>Clone ID</b>       | SM0492  |
| <b>Concentration</b>  |   |
| <b>Conjugation</b>    | Unconjugated  |
| <b>Purification</b>   | Affinity purification   |
| <b>Dilution Range</b> | WB (H, M, R) 1:500-1:1000<br>IHC/IF (H) 1:500-1:1000                      |
| <b>Formulation</b>    | PBS with 0.15% ProClin300, 100 µg/mL BSA and 50% glycerol.                |
| <b>Isotype</b>        | IgG2bk  |
| <b>Storage</b>        | Store at -20°C for up to one year, and avoid repeated freeze-thaw cycles. |
| <b>Instruction</b>    |   |

### TARGET INFORMATION

|                           |   |
|---------------------------|---|
| <b>Gene ID</b>            | 56339   |
| <b>Gene Symbol</b>        | METTL3  |
| <b>Uniprot ID</b>         | MTA70_HUMAN                                       |
| <b>Immunogen</b>          | Recombinant protein corresponding to Human METTL3 |
| <b>Immunogen Region</b>   |   |
| <b>Specificity</b>        |   |
| <b>Immunogen Sequence</b> |   |



This product is suitable for in-vitro studies under the RESEARCH USE ONLY [RUO] licence. This product must not be used as for diagnostic or other medical purposes.  
St John's Laboratory Ltd, Knowledge Dock Business Centre, University Way, London, E16 2RD | Tel: 0208 223 3081