

## Anti-Nephrin antibody [SM0481] (STJA0010481)

STJA0010481

### GENERAL INFORMATION

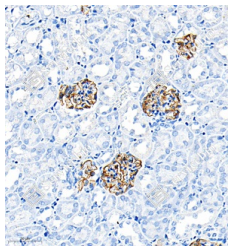
<b>Product Type</b>	Primary antibodies
<b>Short Description</b>	Mouse monoclonal anti-Nephrin is suitable for use in Immunohistochemistry and Immunofluorescence research applications.
<b>Applications</b>	IHC/IF
<b>Host/Source</b>	Mouse
<b>Reactivity</b>	Mouse

### PRODUCT PROPERTIES

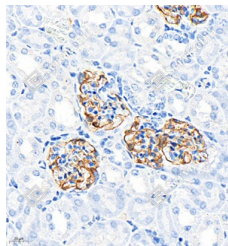
<b>Clonality</b>	Monoclonal
<b>Clone ID</b>	SM0481
<b>Concentration</b>	
<b>Conjugation</b>	Unconjugated
<b>Purification</b>	Affinity purification
<b>Dilution Range</b>	IHC/IF (M) 1:500-1:1500
<b>Formulation</b>	PBS with 0.15% ProClin300, 100 µg/mL BSA and 50% glycerol.
<b>Isotype</b>	IgG1k
<b>Storage Instruction</b>	Store at -20°C for up to one year, and avoid repeated freeze-thaw cycles.

### TARGET INFORMATION

<b>Gene ID</b>	54631
<b>Gene Symbol</b>	Nphs1
<b>Uniprot ID</b>	NPHN_MOUSE
<b>Immunogen</b>	KLH conjugated Synthetic peptide corresponding to Mouse Nephrin
<b>Immunogen Region</b>	
<b>Specificity</b>	
<b>Immunogen Sequence</b>	



Immunohistochemistry analysis of Nephrin. Sample: mouse kidney, 4% PFA 12-24h. Antigen retrieval: Citrate buffer, pressure cooker 2 min. Primary antibody: 1:1000, 4°C overnight. Secondary antibody: HRP conjugated Goat Anti-mouse IgG, 1:200, RT, 1h.



Immunohistochemistry analysis of Nephrin. Sample: mouse kidney, 4% PFA 12-24h. Antigen retrieval: Citrate buffer, pressure cooker 2 min. Primary antibody: 1:1000, 4°C overnight. Secondary antibody: HRP conjugated Goat Anti-mouse IgG, 1:200, RT, 1h.

This product is suitable for in-vitro studies under the RESEARCH USE ONLY [RUO] licence. This product must not be used as for diagnostic or other medical purposes.  
St John's Laboratory Ltd, Knowledge Dock Business Centre, University Way, London, E16 2RD | Tel: 0208 223 3081