

Anti-Insulin antibody [SM0479] (STJA0010479)

STJA0010479

GENERAL INFORMATION

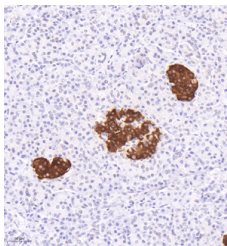
Product Type	Primary antibodies
Short Description	Mouse monoclonal antibody anti-Insulin is suitable for use in Immunohistochemistry and Immunofluorescence research applications.
Applications	IHC/IF
Host/Source	Mouse
Reactivity	Human/Mouse/Rat

PRODUCT PROPERTIES

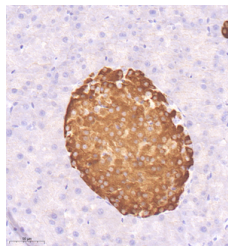
Clonality	Monoclonal
Clone ID	SM0479
Concentration	
Conjugation	Unconjugated
Purification	Affinity purification
Dilution Range	IHC/IF (H, M, R) 1:500-1:1500
Formulation	PBS with 0.15% ProClin300, 100 Mu g/mL BSA and 50% glycerol.
Isotype	IgG1k
Storage Instruction	Store at -20C for up to one year, and avoid repeated freeze-thaw cycles.

TARGET INFORMATION

Gene ID	3630
Gene Symbol	INS
Uniprot ID	INS_HUMAN
Immunogen	KLH conjugated Synthetic peptide corresponding to Human insulin
Immunogen Region	
Specificity	
Immunogen Sequence	



Immunohistochemistry analysis of paraffin embedded human pancreas using insulin at dilution of 1:1000



Immunohistochemistry analysis of paraffin embedded mouse pancreas using insulin at dilution of 1:1000

This product is suitable for in-vitro studies under the RESEARCH USE ONLY [RUO] licence. This product must not be used as for diagnostic or other medical purposes.
St John's Laboratory Ltd, Knowledge Dock Business Centre, University Way, London, E16 2RD | Tel: 0208 223 3081