

Anti-Hsp90 antibody [SM0475] (STJA0010475)

STJA0010475

GENERAL INFORMATION

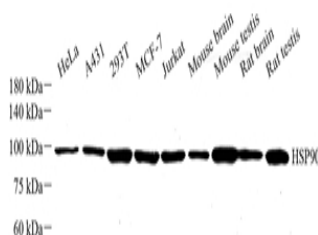
Product Type	Primary antibodies
Short Description	Mouse monoclonal antibody anti-Hsp90 is suitable for use in Western Blot, Immunohistochemistry and Immunofluorescence research applications.
Applications	WB/IHC/IF
Host/Source	Mouse
Reactivity	Human/Mouse/Rat

PRODUCT PROPERTIES

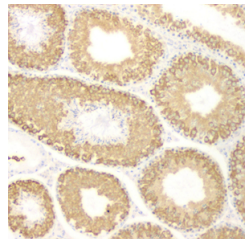
Clonality	Monoclonal
Clone ID	SM0475
Concentration	
Conjugation	Unconjugated
Purification	Affinity purification
Dilution Range	WB (H, M, R) 1:500-1:1000 IHC/IF (M, R) 1:500-1:1000/1:500-1:1000
Formulation	PBS with 0.02% sodium azide, 100 Mu g/ml BSA and 50% glycerol.
Isotype	IgG
Storage	Store at -20C for up to one year, and avoid repeated freeze-thaw cycles.
Instruction	

TARGET INFORMATION

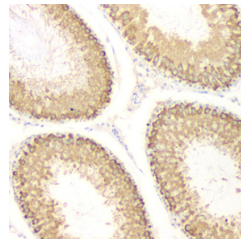
Gene ID	15519
Gene Symbol	Hsp90aa1
Uniprot ID	HS90A_MOUSE
Immunogen	KLH conjugated Synthetic peptide corresponding to Mouse HSP90A
Immunogen Region	
Specificity	
Immunogen Sequence	



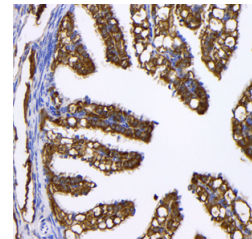
Western blot analysis of HSP90. Sample: Protein treated by RIPA Lysis Buffer. Blocking buffer: 3% Nonfat dry milk in TBST, RT, 1h. Primary antibody: 1:1000, 4C overnight. Secondary antibody: HRP Goat Anti-mouse IgG, 1:3000, RT, 1h.



Immunohistochemistry analysis of HSP90. Sample: mouse testis, 4% PFA 12-24h. Antigen retrieval: Citrate buffer, pressure cooker 2min. Blocking buffer: 3% BSA in PBS, RT, 30min. Primary antibody: 1:1000, 4C overnight. Secondary antibody: HRP Goat Anti-mouse IgG, 1:200 RT 1h.



Immunohistochemistry analysis of HSP90. Sample: Rat testis, 4% PFA 12-24h. Antigen retrieval: Citrate buffer, pressure cooker 2min. Blocking buffer: 3% BSA in PBS, RT, 30min. Primary antibody: 1:1000, 4C overnight. Secondary antibody: HRP Goat Anti-mouse IgG, 1:200 RT 1h.



Immunohistochemistry analysis of HSP90. Sample: mouse ovary, 4% PFA 12-24h. Antigen retrieval: Citrate buffer, pressure cooker 2min. Blocking buffer: 3% BSA in PBS, RT, 30min. Primary antibody: 1:1000, 4C overnight. Secondary antibody: HRP Goat Anti-mouse IgG, 1:200 RT 1h.

This product is suitable for in-vitro studies under the RESEARCH USE ONLY [RUO] licence. This product must not be used as for diagnostic or other medical purposes.
St John's Laboratory Ltd, Knowledge Dock Business Centre, University Way, London, E16 2RD | Tel: 0208 223 3081