

## Anti-Ly6g antibody [SM0468] (STJA0010468)

STJA0010468

### GENERAL INFORMATION

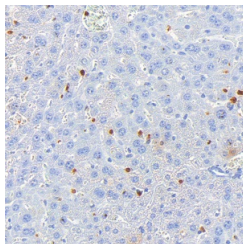
<b>Product Type</b>	Primary antibodies
<b>Short Description</b>	Mouse monoclonal antibody anti-Ly6g is suitable for use in Immunohistochemistry and Immunofluorescence research applications.
<b>Applications</b>	IHC/IF
<b>Host/Source</b>	Mouse
<b>Reactivity</b>	Mouse

### PRODUCT PROPERTIES

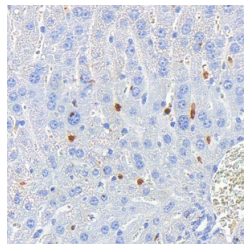
<b>Clonality</b>	Monoclonal
<b>Clone ID</b>	SM0468
<b>Concentration</b>	
<b>Conjugation</b>	Unconjugated
<b>Purification</b>	Affinity purification
<b>Dilution Range</b>	IHC/IF (M) 1:500-1:1500
<b>Formulation</b>	PBS with 0.15% ProClin300, 100 Mu g/mL BSA and 50% glycerol.
<b>Isotype</b>	IgG1
<b>Storage Instruction</b>	Store at -20C for up to one year, and avoid repeated freeze-thaw cycles.

### TARGET INFORMATION

<b>Gene ID</b>	546644
<b>Gene Symbol</b>	Ly6g
<b>Uniprot ID</b>	LY6G_MOUSE
<b>Immunogen</b>	Recombinant protein corresponding to Mouse Ly6g
<b>Immunogen Region</b>	
<b>Specificity</b>	
<b>Immunogen Sequence</b>	



Immunohistochemistry analysis of Ly6g. Sample: mouse inflammatory model induced by lps liver, 4% PFA 12-24h. Antigen retrieval: Citrate buffer, pressure cooker 2 min. Primary antibody: 1:1000, 4C overnight. Secondary antibody: S-vision poly-HRP conjugated Goat Anti-Rat IgG, Ready to use, RT, 20min.



Immunohistochemistry analysis of Ly6g. Sample: mouse inflammatory model induced by lps liver, 4% PFA 12-24h. Antigen retrieval: Citrate buffer, pressure cooker 2 min. Primary antibody: 1:1000, 4C overnight. Secondary antibody: S-vision poly-HRP conjugated Goat Anti-Rat IgG, Ready to use, RT, 20min.