

Anti-pan Cytokeratin antibody [SM0456] (STJA0010456)

STJA0010456

GENERAL INFORMATION

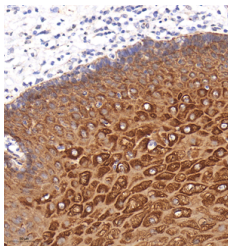
Product Type	Primary antibodies
Short Description	Mouse monoclonal antibody anti-pan Cytokeratin is suitable for use in Immunohistochemistry and Immunofluorescence research applications.
Applications	IHC/IF
Host/Source	Mouse
Reactivity	Human

PRODUCT PROPERTIES

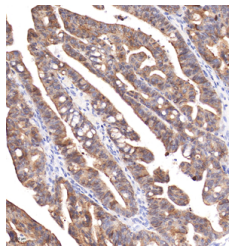
Clonality	Monoclonal
Clone ID	SM0456
Concentration	
Conjugation	Unconjugated
Purification	Affinity purification
Dilution Range	IHC/IF (H) 1:500-1:1000
Formulation	PBS with 0.15% ProClin300, 100 Mu g/mL BSA and 50% glycerol.
Isotype	IgG2ak
Storage Instruction	Store at -20°C for up to one year, and avoid repeated freeze-thaw cycles.

TARGET INFORMATION

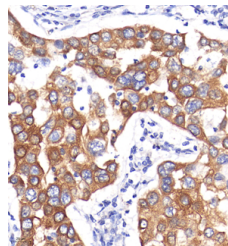
Gene ID	54474
Gene Symbol	KRT20
Uniprot ID	K1C20_HUMAN
Immunogen	KLH conjugated Synthetic peptide corresponding to Human pan Cytokeratin. Human epidermal keratins
Immunogen Region	
Specificity	
Immunogen Sequence	



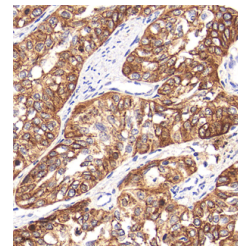
Immunohistochemistry analysis of paraffin embedded human esophagus using Pan-CK at dilution of 1:1000



Immunohistochemistry analysis of paraffin embedded human colon cancer using Pan-CK at dilution of 1:1000



Immunohistochemistry analysis of paraffin embedded human lung adenocarcinoma using Pan-CK at dilution of 1:1000



This product is suitable for in-vitro studies under the RESEARCH USE ONLY [RUO] licence. This product must not be used as for diagnostic or other medical purposes.

St John's Laboratory Ltd, Knowledge Dock Business Centre, University Way, London, E16 2RD | Tel: 0208 223 3081