

## Anti-Estrogen Receptor alpha antibody [SM0443] (STJA0010443)

STJA0010443

### GENERAL INFORMATION

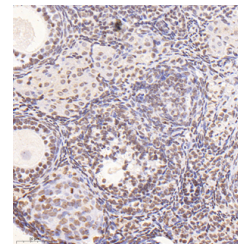
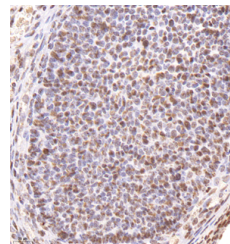
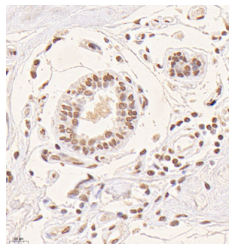
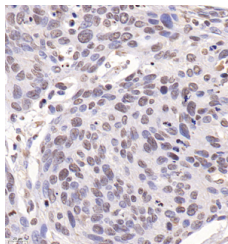
<b>Product Type</b>	Primary antibodies
<b>Short Description</b>	Mouse monoclonal antibody anti-Estrogen Receptor alpha is suitable for use in Immunohistochemistry and Immunofluorescence research applications.
<b>Applications</b>	IHC/IF
<b>Host/Source</b>	Mouse
<b>Reactivity</b>	Human/Mouse/Rat

### PRODUCT PROPERTIES

<b>Clonality</b>	Monoclonal
<b>Clone ID</b>	SM0443
<b>Concentration</b>	
<b>Conjugation</b>	Unconjugated
<b>Purification</b>	Affinity purification
<b>Dilution Range</b>	IHC/IF (H, M, R) 1:500-1:1500
<b>Formulation</b>	PBS with 0.15% ProClin300, 100 Mu g/mL BSA and 50% glycerol.
<b>Isotype</b>	IgG1k
<b>Storage</b>	Store at -20C for up to one year, and avoid repeated freeze-thaw cycles.
<b>Instruction</b>	

### TARGET INFORMATION

<b>Gene ID</b>	<a href="#">2099</a>
<b>Gene Symbol</b>	<a href="#">ESR1</a>
<b>Uniprot ID</b>	<a href="#">ESR1_HUMAN</a>
<b>Immunogen</b>	KLH conjugated Synthetic peptide corresponding to Human ESR1
<b>Immunogen</b>	
<b>Region</b>	
<b>Specificity</b>	
<b>Immunogen</b>	
<b>Sequence</b>	



This product is suitable for in-vitro studies under the RESEARCH USE ONLY [RUO] licence. This product must not be used as for diagnostic or other medical purposes.  
St John's Laboratory Ltd, Knowledge Dock Business Centre, University Way, London, E16 2RD | Tel: 0208 223 3081