

Anti-AMACR antibody [SM0426] (STJA0010426)

STJA0010426

GENERAL INFORMATION

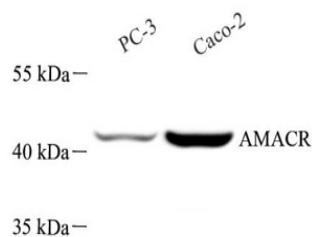
Product Type	Primary antibodies
Short Description	Mouse monoclonal antibody anti-AMACR is suitable for use in Western Blot, Immunohistochemistry and Immunofluorescence research applications.
Applications	WB/IHC/IF
Host/Source	Mouse
Reactivity	Human

PRODUCT PROPERTIES

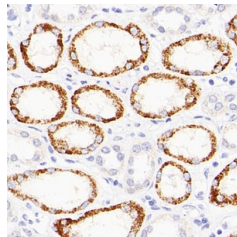
Clonality	Monoclonal
Clone ID	SM0426
Concentration	
Conjugation	Unconjugated
Purification	Affinity purification
Dilution Range	WB (H) 1:500-1:1000 IHC/IF (H) 1:500-1:1000
Formulation	PBS with 0.15% ProClin300, 100 Mu g/mL BSA and 50% glycerol.
Isotype	IgG1k
Storage	Store at -20C for up to one year, and avoid repeated freeze-thaw cycles.
Instruction	

TARGET INFORMATION

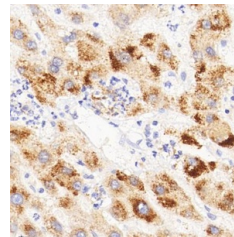
Gene ID	23600
Gene Symbol	AMACR
Uniprot ID	AMACR_HUMAN
Immunogen	KLH conjugated Synthetic peptide corresponding to Human AMACR
Immunogen Region	
Specificity	
Immunogen Sequence	



Western blot analysis of AMACR at dilution of 1:1000



Immunohistochemistry analysis of paraffin embedded human kidney using AMACR at dilution of 1:500



Immunohistochemistry analysis of paraffin embedded human liver cancer using AMACR at dilution of 1:500

This product is suitable for in-vitro studies under the RESEARCH USE ONLY [RUO] licence. This product must not be used as for diagnostic or other medical purposes.
St John's Laboratory Ltd, Knowledge Dock Business Centre, University Way, London, E16 2RD | Tel: 0208 223 3081