

Anti-CD11b antibody [SM0390] (STJA0010390)

STJA0010390

GENERAL INFORMATION

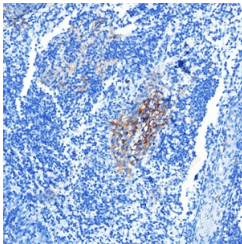
Product Type	Primary antibodies
Short Description	Mouse monoclonal antibody anti-CD11b is suitable for use in Immunohistochemistry and Immunofluorescence research applications.
Applications	IHC/IF
Host/Source	Mouse
Reactivity	Human/Mouse/Rat

PRODUCT PROPERTIES

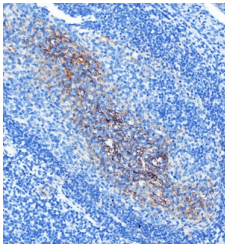
Clonality	Monoclonal
Clone ID	SM0390
Concentration	
Conjugation	Unconjugated
Purification	Affinity purification
Dilution Range	IHC/IF (H, M, R) 1:500-1:1000
Formulation	PBS with 0.15% ProClin300, 100 Mu g/mL BSA and 50% glycerol.
Isotype	IgG2ak
Storage Instruction	Store at -20C for up to one year, and avoid repeated freeze-thaw cycles.

TARGET INFORMATION

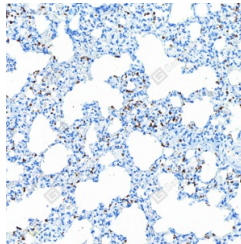
Gene ID	3684
Gene Symbol	ITGAM
Uniprot ID	ITAM_HUMAN
Immunogen	Recombinant protein corresponding to Human CD11b
Immunogen Region	
Specificity	
Immunogen Sequence	



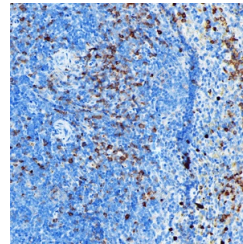
Immunohistochemistry analysis of CD11b. Sample: Human tonsil, 4% PFA 12-24h. Antigen retrieval: Citrate buffer, pressure cooker 2 min. Primary antibody: 1:500, 4C overnight. Secondary antibody: S-vision poly-
HRP conjugated Goat Anti-mouse IgG, Ready to use, RT, 20min.



Immunohistochemistry analysis of CD11b. Sample: Human tonsil, 4% PFA 12-24h. Antigen retrieval: Citrate buffer, pressure cooker 2 min. Primary antibody: 1:1000, 4C overnight. Secondary antibody: S-vision poly-
HRP conjugated Goat Anti-mouse IgG, Ready to use, RT, 20min.



Immunohistochemistry analysis of CD11b. Sample: mouse lung, 4% PFA 12-24h. Antigen retrieval: Citrate buffer, pressure cooker 2 min. Primary antibody: 1:500, 4C overnight. Secondary antibody: S-vision poly-
HRP conjugated Goat Anti-mouse IgG, Ready to use, RT, 20min.



Immunohistochemistry analysis of CD11b. Sample: mouse spleen, 4% PFA 12-24h. Antigen retrieval: Citrate buffer, pressure cooker 2 min. Primary antibody: 1:500, 4C overnight. Secondary antibody: S-vision poly-
HRP conjugated Goat Anti-mouse IgG, Ready to use, RT, 20min.

This product is suitable for in-vitro studies under the RESEARCH USE ONLY [RUO] licence. This product must not be used as for diagnostic or other medical purposes.
St John's Laboratory Ltd, Knowledge Dock Business Centre, University Way, London, E16 2RD | Tel: 0208 223 3081