

Anti-PMS2 antibody [SM0372] (STJA0010372)

STJA0010372

GENERAL INFORMATION

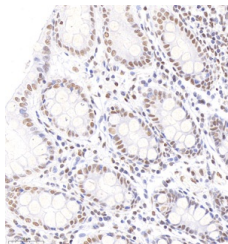
Product Type	Primary antibodies
Short Description	Mouse monoclonal antibody anti-PMS2 is suitable for use in Immunohistochemistry and Immunofluorescence research applications.
Applications	IHC/IF
Host/Source	Mouse
Reactivity	Human/Mouse/Rat

PRODUCT PROPERTIES

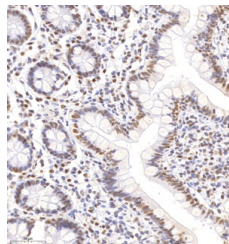
Clonality	Monoclonal
Clone ID	SM0372
Concentration	
Conjugation	Unconjugated
Purification	Affinity purification
Dilution Range	IHC/IF (H, M, R) 1:500-1000
Formulation	PBS with 0.15% ProClin300, 100 µg/mL BSA and 50% glycerol.
Isotype	IgG2bk
Storage Instruction	Store at -20°C for up to one year, and avoid repeated freeze-thaw cycles.

TARGET INFORMATION

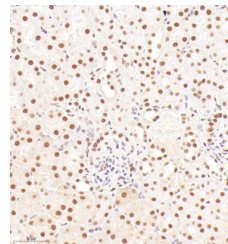
Gene ID	5395
Gene Symbol	PMS2
Uniprot ID	PMS2_HUMAN
Immunogen	KLH conjugated Synthetic peptide corresponding to Human Postmeiotic Segregation Increased 2
Immunogen Region	
Specificity	
Immunogen Sequence	



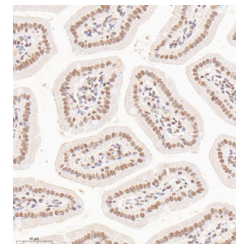
Immunohistochemistry analysis of PMS2. Sample: Human colon, 4% PFA 12-24h. Antigen retrieval: Citrate buffer, pressure cooker 2min. Primary antibody: 1:3000, 4°C overnight. Secondary antibody: HRP Goat Anti-mouse IgG, 1:200, RT, 1h.



Immunohistochemistry analysis of PMS2. Sample: Human small intestine, 4% PFA 12-24h. Antigen retrieval: Citrate buffer, pressure cooker 2min. Primary antibody: 1:3000, 4°C overnight. Secondary antibody: HRP Goat Anti-mouse IgG, 1:200 RT, 1h.



Immunohistochemistry analysis of PMS2. Sample: mouse kidney, 4% PFA 12-24h. Antigen retrieval: Citrate buffer, pressure cooker 2min. Primary antibody: 1:3000, 4°C overnight. Secondary antibody: HRP Goat Anti-mouse IgG, 1:200 RT, 1h.



Immunohistochemistry analysis of PMS2. Sample: mouse small intestine, 4% PFA 12-24h. Antigen retrieval: Citrate buffer, pressure cooker 2min. Primary antibody: 1:3000, 4°C overnight. Secondary antibody: HRP Goat Anti-mouse IgG, 1:200 RT, 1h.

This product is suitable for in-vitro studies under the RESEARCH USE ONLY [RUO] licence. This product must not be used as for diagnostic or other medical purposes.
St John's Laboratory Ltd, Knowledge Dock Business Centre, University Way, London, E16 2RD | Tel: 0208 223 3081