

Anti-BMP4 antibody (261-310) (STJA0010145)

STJA0010145

GENERAL INFORMATION

Product Type	Primary antibodies
Short Description	Rabbit polyclonal antibody anti-Bone morphogenetic protein 4 (261-310) is suitable for use in Western Blot and ELISA research applications.
Applications	WB/ELISA
Host/Source	Rabbit
Reactivity	Human/Rat/Mouse

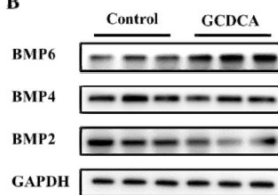
PRODUCT PROPERTIES

Clonality	Polyclonal
Clone ID	
Concentration	1 mg/mL
Conjugation	Unconjugated
Purification	The antibody was affinity-purified from rabbit antiserum by affinity-chromatography using epitope-specific immunogen.
Dilution Range	WB 1:1000-2000 ELISA 1:5000-20000
Formulation	Liquid in PBS containing 50% Glycerol, 0.5% BSA and 0.02% Sodium Azide.
Isotype	IgG
Storage Instruction	Store at -20°C for up to 1 year from the date of receipt, and avoid repeat freeze-thaw cycles.

TARGET INFORMATION

Gene ID	652
Gene Symbol	BMP4
Uniprot ID	BMP4_HUMAN
Immunogen	Synthesized peptide derived from human BMP-4 AA range: 261-310
Immunogen Region	261-310
Specificity	This antibody detects endogenous levels of Human BMP-4
Immunogen Sequence	

B



Glycochenodeoxycholate Affects Iron Homeostasis via Up-Regulating Hepcidin Expression Nutrients Long-jiao Wang WB mouse

This product is suitable for in-vitro studies under the RESEARCH USE ONLY [RUO] licence. This product must not be used as for diagnostic or other medical purposes.
St John's Laboratory Ltd, Knowledge Dock Business Centre, University Way, London, E16 2RD | Tel: 0208 223 3081