

## Anti-PPP3CA antibody (STJA0010127)

STJA0010127

### GENERAL INFORMATION

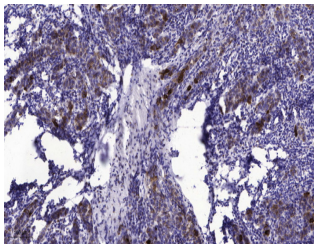
<b>Product Type</b>	Primary antibodies
<b>Short Description</b>	Rabbit polyclonal antibody anti-Protein phosphatase 3 catalytic subunit alpha is suitable for use in Western Blot and Immunohistochemistry research applications.
<b>Applications</b>	WB/IHC
<b>Host/Source</b>	Rabbit
<b>Reactivity</b>	Human/Mouse/Rat

### PRODUCT PROPERTIES

<b>Clonality</b>	Polyclonal
<b>Clone ID</b>	
<b>Concentration</b>	1 mg/mL
<b>Conjugation</b>	Unconjugated
<b>Purification</b>	The antibody was affinity-purified from rabbit antiserum by affinity-chromatography using epitope-specific immunogen.
<b>Dilution Range</b>	WB 1:500-2000 IHC-p 1:50-300
<b>Formulation</b>	Liquid in PBS containing 50% Glycerol, 0.5% BSA and 0.02% Sodium Azide.
<b>Isotype</b>	IgG
<b>Storage</b>	Store at -20°C for up to 1 year from the date of receipt, and avoid repeat freeze-thaw cycles.
<b>Instruction</b>	

### TARGET INFORMATION

<b>Gene ID</b>	5530
<b>Gene Symbol</b>	PPP3CA
<b>Uniprot ID</b>	PP2BA_HUMAN
<b>Immunogen</b>	Synthesized peptide derived from human PP2B-A Alpha
<b>Immunogen Region</b>	
<b>Specificity</b>	This antibody detects endogenous levels of Human, Mouse, Rat PP2B-A Alpha
<b>Immunogen Sequence</b>	



Immunohistochemical analysis of paraffin-embedded human Breast cancer. 1. Antibody was diluted at 1:200 (4A°C overnight). 2. Tris-EDTA, pH9.0 was used for antigen retrieval. 3. Secondary antibody was diluted at 1:200 (room temperature, 45min).

This product is suitable for in-vitro studies under the RESEARCH USE ONLY [RUO] licence. This product must not be used as for diagnostic or other medical purposes.  
St John's Laboratory Ltd, Knowledge Dock Business Centre, University Way, London, E16 2RD | Tel: 0208 223 3081