

Anti-Phospho-G3BP1-Ser149 antibody (STJA0010081)

STJA0010081

GENERAL INFORMATION

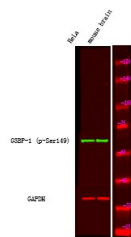
| | |
|--------------------------|--|
| Product Type | Primary antibodies |
| Short Description | Rabbit polyclonal antibody anti-Phospho-Ras GTPase-activating protein-binding protein 1-Ser149 is suitable for use in Immunohistochemistry and Western Blot research applications. |
| Applications | IHC/WB |
| Host/Source | Rabbit |
| Reactivity | Human/Mouse |

PRODUCT PROPERTIES

| | |
|-----------------------|---|
| Clonality | Polyclonal |
| Clone ID | |
| Concentration | 1 mg/mL |
| Conjugation | Unconjugated |
| Purification | The antibody was affinity-purified from rabbit serum by affinity-chromatography using specific immunogen. |
| Dilution Range | WB 1:500-2000 IHC 1:50-200 |
| Formulation | Liquid in PBS containing 50% Glycerol and 0.02% Sodium Azide. |
| Isotype | IgG |
| Storage | Store at -20°C for up to 1 year from the date of receipt, and avoid repeat freeze-thaw cycles. |
| Instruction | |

TARGET INFORMATION

| | |
|---------------------------|---|
| Gene ID | 10146 |
| Gene Symbol | G3BP1 |
| Uniprot ID | G3BP1_HUMAN |
| Immunogen | Synthesized peptide derived from human G3BP-1 (Phospho Ser149) |
| Immunogen Region | |
| Specificity | This antibody detects endogenous levels of G3BP-1 (Phospho Ser149) Rabbit pAb at Human, Mouse |
| Immunogen Sequence | |



Western Blot analysis of HeLa mouse brain tissue using primary antibody at 1:1000 dilution 4A°C, overnight. Secondary antibody (STJS000791) was diluted at 1:10000 25A°C, 1.5 hours

This product is suitable for in-vitro studies under the RESEARCH USE ONLY [RUO] licence. This product must not be used as for diagnostic or other medical purposes.
St John's Laboratory Ltd, Knowledge Dock Business Centre, University Way, London, E16 2RD | Tel: 0208 223 3081