

Anti-Phospho-SHC1-Tyr349+Tyr350 antibody (STJA0010063)

STJA0010063

GENERAL INFORMATION

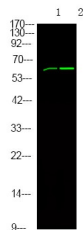
Product Type	Primary antibodies
Short Description	Rabbit polyclonal antibody anti-Phospho-SHC-transforming protein 1-Tyr349+Tyr350 is suitable for use in Immunohistochemistry and Western Blot research applications.
Applications	IHC/WB
Host/Source	Rabbit
Reactivity	Human/Mouse/Rat

PRODUCT PROPERTIES

Clonality	Polyclonal
Clone ID	
Concentration	1 mg/mL
Conjugation	Unconjugated
Purification	The antibody was affinity-purified from rabbit serum by affinity-chromatography using specific immunogen.
Dilution Range	WB 1:500-2000 IHC 1:50-200
Formulation	Liquid in PBS containing 50% Glycerol and 0.02% Sodium Azide.
Isotype	IgG
Storage	Store at -20°C for up to 1 year from the date of receipt, and avoid repeat freeze-thaw cycles.
Instruction	

TARGET INFORMATION

Gene ID	6464
Gene Symbol	SHC1
Uniprot ID	SHC1_HUMAN
Immunogen	Synthesized peptide derived from human SHC1 (Phospho Tyr349+Tyr350)
Immunogen Region	
Specificity	This antibody detects endogenous levels of SHC1 (Phospho Tyr349+Tyr350) Rabbit pAb at Human, Mouse, Rat
Immunogen Sequence	



Western Blot analysis of 1 MCF-7 cell 2 Serum-free treated, using primary antibody at 1:1000 dilution. Secondary antibody (STJS000791) was diluted at 1:10000

This product is suitable for in-vitro studies under the RESEARCH USE ONLY [RUO] licence. This product must not be used as for diagnostic or other medical purposes.
St John's Laboratory Ltd, Knowledge Dock Business Centre, University Way, London, E16 2RD | Tel: 0208 223 3081