

Anti-Phospho-RBL2-Thr642 antibody (STJA0010062)

STJA0010062

GENERAL INFORMATION

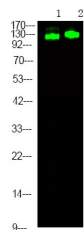
Product Type	Primary antibodies
Short Description	Rabbit polyclonal antibody anti-Phospho-Retinoblastoma-like protein 2-Thr642 is suitable for use in Immunohistochemistry and Western Blot research applications.
Applications	IHC/WB
Host/Source	Rabbit
Reactivity	Human/Mouse/Rat

PRODUCT PROPERTIES

Clonality	Polyclonal
Clone ID	
Concentration	1 mg/mL
Conjugation	Unconjugated
Purification	The antibody was affinity-purified from rabbit serum by affinity-chromatography using specific immunogen.
Dilution Range	WB 1:500-2000 IHC 1:50-200
Formulation	Liquid in PBS containing 50% Glycerol and 0.02% Sodium Azide.
Isotype	IgG
Storage	Store at -20°C for up to 1 year from the date of receipt, and avoid repeat freeze-thaw cycles.
Instruction	

TARGET INFORMATION

Gene ID	5934
Gene Symbol	RBL2
Uniprot ID	RBL2_HUMAN
Immunogen	Synthesized peptide derived from human RBL2 (Phospho Thr642)
Immunogen Region	
Specificity	This antibody detects endogenous levels of RBL2 (Phospho Thr642) Rabbit pAb at Human, Mouse, Rat
Immunogen Sequence	



Western Blot analysis of 1 HeLa cell, 22 Serum-free treated, using primary antibody at 1:1000 dilution. Secondary antibody (STJS000791) was diluted at 1:10000

This product is suitable for in-vitro studies under the RESEARCH USE ONLY [RUO] licence. This product must not be used as for diagnostic or other medical purposes.
St John's Laboratory Ltd, Knowledge Dock Business Centre, University Way, London, E16 2RD | Tel: 0208 223 3081