

## Anti-Phospho-ATM-Ser179 antibody (STJA0010053)

STJA0010053

### GENERAL INFORMATION

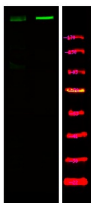
<b>Product Type</b>	Primary antibodies
<b>Short Description</b>	Rabbit polyclonal antibody anti-Phospho-Serine-protein kinase ATM-Ser179 is suitable for use in Immunohistochemistry and Western Blot research applications.
<b>Applications</b>	IHC/WB
<b>Host/Source</b>	Rabbit
<b>Reactivity</b>	Human/Mouse

### PRODUCT PROPERTIES

<b>Clonality</b>	Polyclonal
<b>Clone ID</b>	
<b>Concentration</b>	1 mg/mL
<b>Conjugation</b>	Unconjugated
<b>Purification</b>	The antibody was affinity-purified from rabbit serum by affinity-chromatography using specific immunogen.
<b>Dilution Range</b>	WB 1:500-2000 IHC 1:50-200
<b>Formulation</b>	Liquid in PBS containing 50% Glycerol and 0.02% Sodium Azide.
<b>Isotype</b>	IgG
<b>Storage</b>	Store at -20°C for up to 1 year from the date of receipt, and avoid repeat freeze-thaw cycles.
<b>Instruction</b>	

### TARGET INFORMATION

<b>Gene ID</b>	472
<b>Gene Symbol</b>	ATM
<b>Uniprot ID</b>	ATM_HUMAN
<b>Immunogen</b>	Synthesized peptide derived from human ATM (Phospho Ser183)
<b>Immunogen Region</b>	
<b>Specificity</b>	This antibody detects endogenous levels of ATM (Phospho Ser183) Rabbit pAb at Human, Mouse
<b>Immunogen Sequence</b>	



Western Blot analysis of 1 K562 cell, 2 LPS 100ng/mL 30min treated, using primary antibody at 1:1000 dilution. Secondary antibody (STJS000791) was diluted at 1:10000