

Anti-Phospho-BCL6-Ser343 antibody (STJA0010020)

STJA0010020

GENERAL INFORMATION

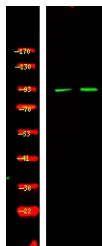
Product Type	Primary antibodies
Short Description	Rabbit polyclonal antibody anti-Phospho-B-cell lymphoma 6 protein-Ser343 is suitable for use in Immunohistochemistry and Western Blot research applications.
Applications	IHC/WB
Host/Source	Rabbit
Reactivity	Human/Mouse

PRODUCT PROPERTIES

Clonality	Polyclonal
Clone ID	
Concentration	1 mg/mL
Conjugation	Unconjugated
Purification	The antibody was affinity-purified from rabbit serum by affinity-chromatography using specific immunogen.
Dilution Range	WB 1:500-2000 IHC 1:50-200
Formulation	Liquid in PBS containing 50% Glycerol and 0.02% Sodium Azide.
Isotype	IgG
Storage	Store at -20°C for up to 1 year from the date of receipt, and avoid repeat freeze-thaw cycles.
Instruction	

TARGET INFORMATION

Gene ID	604
Gene Symbol	BCL6
Uniprot ID	BCL6_HUMAN
Immunogen	Synthesized peptide derived from human Bcl-6 (Phospho Ser343)
Immunogen Region	
Specificity	This antibody detects endogenous levels of Bcl-6 (Phospho Ser343) Rabbit pAb at Human, Mouse
Immunogen Sequence	



Western Blot analysis of 1 Raji cell, 2 Serum-free treated, using primary antibody at 1:1000 dilution. Secondary antibody (STJS000791) was diluted at 1:10000

This product is suitable for in-vitro studies under the RESEARCH USE ONLY [RUO] licence. This product must not be used as for diagnostic or other medical purposes.
St John's Laboratory Ltd, Knowledge Dock Business Centre, University Way, London, E16 2RD | Tel: 0208 223 3081