

Anti-Phospho-LEPR-Tyr986 antibody (STJA0010018)

STJA0010018

GENERAL INFORMATION

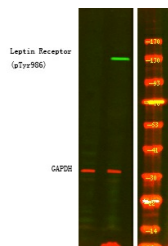
Product Type	Primary antibodies
Short Description	Rabbit polyclonal antibody anti-Phospho-Leptin receptor-Tyr986 is suitable for use in Immunohistochemistry and Western Blot research applications.
Applications	IHC/WB
Host/Source	Rabbit
Reactivity	Human/Mouse/Rat

PRODUCT PROPERTIES

Clonality	Polyclonal
Clone ID	
Concentration	1 mg/mL
Conjugation	Unconjugated
Purification	The antibody was affinity-purified from rabbit serum by affinity-chromatography using specific immunogen.
Dilution Range	WB 1:500-2000 IHC 1:50-200
Formulation	Liquid in PBS containing 50% Glycerol and 0.02% Sodium Azide.
Isotype	IgG
Storage	Store at -20°C for up to 1 year from the date of receipt, and avoid repeat freeze-thaw cycles.
Instruction	

TARGET INFORMATION

Gene ID	3953
Gene Symbol	LEPR
Uniprot ID	LEPR_HUMAN
Immunogen	Synthesized peptide derived from human Leptin Receptor (Phospho Tyr986)
Immunogen Region	
Specificity	This antibody detects endogenous levels of Leptin Receptor (Phospho Tyr986) Rabbit pAb at Human, Mouse, Rat
Immunogen Sequence	



Western Blot analysis of 1 HeLa cell, 2 LPS 100ng/mL. 30min treated, using primary antibody at 1:1000 dilution. Secondary antibody (STJS000791) was diluted at 1:10000.