

Anti-Phospho-NDEL1-Thr219 antibody (STJA0010006)

STJA0010006

GENERAL INFORMATION

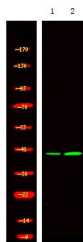
| | |
|--------------------------|--|
| Product Type | Primary antibodies |
| Short Description | Rabbit polyclonal antibody anti-Phospho-Nuclear distribution protein nudE-like 1-Thr219 is suitable for use in Western Blot research applications. |
| Applications | WB |
| Host/Source | Rabbit |
| Reactivity | Human/Mouse/Rat |

PRODUCT PROPERTIES

| | |
|----------------------------|---|
| Clonality | Polyclonal |
| Clone ID | |
| Concentration | 1 mg/mL |
| Conjugation | Unconjugated |
| Purification | The antibody was affinity-purified from rabbit serum by affinity-chromatography using specific immunogen. |
| Dilution Range | WB 1:500-2000 |
| Formulation | Liquid in PBS containing 50% Glycerol, 0.5% BSA and 0.02% Sodium Azide. |
| Isotype | IgG |
| Storage Instruction | Store at -20°C for up to 1 year from the date of receipt, and avoid repeat freeze-thaw cycles. |

TARGET INFORMATION

| | |
|---------------------------|--|
| Gene ID | 81565 |
| Gene Symbol | NDEL1 |
| Uniprot ID | NDEL1_HUMAN |
| Immunogen | Synthesized peptide derived from human NDEL1 (Phospho-Thr219) |
| Immunogen Region | |
| Specificity | This antibody detects endogenous levels of NDEL1 (Phospho-Thr219) at Human, Mouse, Rat |
| Immunogen Sequence | |



Western Blot analysis of 1 HepG2 cell 2. LPS 100ng/mL 30min treated, using primary antibody at 1:1000 dilution. Secondary antibody (STJS000791) was diluted at 1:10000

This product is suitable for in-vitro studies under the RESEARCH USE ONLY [RUO] licence. This product must not be used as for diagnostic or other medical purposes.
St John's Laboratory Ltd, Knowledge Dock Business Centre, University Way, London, E16 2RD | Tel: 0208 223 3081