

Anti-Phospho-TOPBP1-Ser1159 antibody (STJA0009955)

STJA0009955

GENERAL INFORMATION

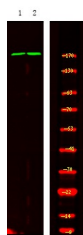
Product Type	Primary antibodies
Short Description	Rabbit polyclonal antibody anti-Phospho-DNA topoisomerase 2-binding protein 1-Ser1159 is suitable for use in Western Blot research applications.
Applications	WB
Host/Source	Rabbit
Reactivity	Human/Mouse/Rat

PRODUCT PROPERTIES

Clonality	Polyclonal
Clone ID	
Concentration	1 mg/mL
Conjugation	Unconjugated
Purification	The antibody was affinity-purified from rabbit serum by affinity-chromatography using specific immunogen.
Dilution Range	WB 1:500-2000
Formulation	Liquid in PBS containing 50% Glycerol, 0.5% BSA and 0.02% Sodium Azide.
Isotype	IgG
Storage Instruction	Store at -20°C for up to 1 year from the date of receipt, and avoid repeat freeze-thaw cycles.

TARGET INFORMATION

Gene ID	11073
Gene Symbol	TOPBP1
Uniprot ID	TOPB1_HUMAN
Immunogen	Synthesized peptide derived from human TOPBP1 (Phospho-Ser1159)
Immunogen Region	
Specificity	This antibody detects endogenous levels of TOPBP1 (Phospho-Ser1159) at Human, Mouse, Rat
Immunogen Sequence	



Western Blot analysis of 1HeLa cell 2 LPS 100ng/mL 30min treated, using primary antibody at 1:1000 dilution. Secondary antibody (STJS000791) was diluted at 1:10000

This product is suitable for in-vitro studies under the RESEARCH USE ONLY [RUO] licence. This product must not be used as for diagnostic or other medical purposes.
St John's Laboratory Ltd, Knowledge Dock Business Centre, University Way, London, E16 2RD | Tel: 0208 223 3081