

Anti-Phospho-BCL10-Ser138 antibody (STJA0009952)

STJA0009952

GENERAL INFORMATION

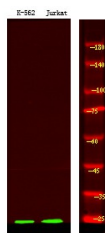
Product Type	Primary antibodies
Short Description	Rabbit polyclonal antibody anti-Phospho-B-cell lymphoma/leukemia 10-Ser138 is suitable for use in Western Blot research applications.
Applications	WB
Host/Source	Rabbit
Reactivity	Human/Mouse/Rat

PRODUCT PROPERTIES

Clonality	Polyclonal
Clone ID	
Concentration	1 mg/mL
Conjugation	Unconjugated
Purification	The antibody was affinity-purified from rabbit serum by affinity-chromatography using specific immunogen.
Dilution Range	WB 1:500-2000
Formulation	Liquid in PBS containing 50% Glycerol, 0.5% BSA and 0.02% Sodium Azide.
Isotype	IgG
Storage Instruction	Store at -20°C for up to 1 year from the date of receipt, and avoid repeat freeze-thaw cycles.

TARGET INFORMATION

Gene ID	8915
Gene Symbol	BCL10
Uniprot ID	BCL10_HUMAN
Immunogen	Synthesized peptide derived from human BCL-10 (Phospho-Ser138)
Immunogen Region	
Specificity	This antibody detects endogenous levels of BCL-10 (Phospho-Ser138) at Human, Mouse, Rat
Immunogen Sequence	



Western Blot analysis of K-562 Jurkat using primary antibody at 1:1000 dilution 4A°C, overnight. Secondary antibody (STJS000791) was diluted at 1:10000 25A°C, 1.5 hours

This product is suitable for in-vitro studies under the RESEARCH USE ONLY [RUO] licence. This product must not be used as for diagnostic or other medical purposes.
St John's Laboratory Ltd, Knowledge Dock Business Centre, University Way, London, E16 2RD | Tel: 0208 223 3081