

## Anti-Phospho-CAMKK1-Ser458/495 antibody (STJA0009937)

STJA0009937

### GENERAL INFORMATION

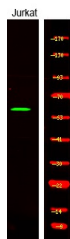
|                          |  |
|--------------------------|--|
| <b>Product Type</b>      | Primary antibodies   |
| <b>Short Description</b> | Rabbit polyclonal antibody anti-Phospho-Calcium/calmodulin-dependent protein kinase kinase 1-Ser458/495 is suitable for use in Western Blot research applications. |
| <b>Applications</b>      | WB   |
| <b>Host/Source</b>       | Rabbit   |
| <b>Reactivity</b>        | Human/Mouse/Rat  |

### PRODUCT PROPERTIES

|                            |   |
|----------------------------|---|
| <b>Clonality</b>           | Polyclonal  |
| <b>Clone ID</b>            |   |
| <b>Concentration</b>       | 1 mg/mL   |
| <b>Conjugation</b>         | Unconjugated  |
| <b>Purification</b>        | The antibody was affinity-purified from rabbit serum by affinity-chromatography using specific immunogen. |
| <b>Dilution Range</b>      | WB 1:500-2000   |
| <b>Formulation</b>         | Liquid in PBS containing 50% Glycerol, 0.5% BSA and 0.02% Sodium Azide.                                   |
| <b>Isotype</b>             | IgG   |
| <b>Storage Instruction</b> | Store at -20°C for up to 1 year from the date of receipt, and avoid repeat freeze-thaw cycles.            |

### TARGET INFORMATION

|                           |   |
|---------------------------|---|
| <b>Gene ID</b>            | 84254   |
| <b>Gene Symbol</b>        | CAMKK1  |
| <b>Uniprot ID</b>         | KKCC1_HUMAN   |
| <b>Immunogen</b>          | Synthesized peptide derived from human CAMKK1/2 (Phospho-Ser458/495)                          |
| <b>Immunogen Region</b>   |   |
| <b>Specificity</b>        | This antibody detects endogenous levels of CAMKK1/2 (Phospho-Ser458/495) at Human, Mouse, Rat |
| <b>Immunogen Sequence</b> |   |



Western Blot analysis of Jurkat cell, 2. LPS 100ng/mL 30min treated, using primary antibody at 1:1000 dilution. Secondary antibody (STJS000791) was diluted at 1:10000

This product is suitable for in-vitro studies under the RESEARCH USE ONLY [RUO] licence. This product must not be used as for diagnostic or other medical purposes.  
St John's Laboratory Ltd, Knowledge Dock Business Centre, University Way, London, E16 2RD | Tel: 0208 223 3081