

Anti-Phospho-LAT-Tyr255 antibody (STJA0009863)

STJA0009863

GENERAL INFORMATION

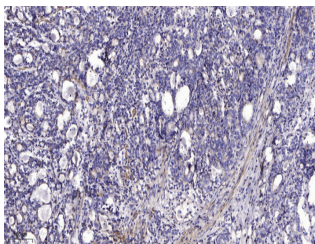
Product Type	Primary antibodies
Short Description	Rabbit polyclonal antibody anti-Phospho-Linker for activation of T-cells family member 1-Tyr255 is suitable for use in Western Blot, ELISA and Immunohistochemistry research applications.
Applications	WB/ELISA/IHC
Host/Source	Rabbit
Reactivity	Human/Mouse/Rat

PRODUCT PROPERTIES

Clonality	Polyclonal
Clone ID	
Concentration	1 mg/mL
Conjugation	Unconjugated
Purification	The antibody was affinity-purified from rabbit serum by affinity-chromatography using specific immunogen.
Dilution Range	WB 1:500-2000 IHC-p 1:50-300 ELISA 2000-20000
Formulation	Liquid in PBS containing 50% Glycerol, 0.5% BSA and 0.02% Sodium Azide.
Isotype	IgG
Storage Instruction	Store at -20°C for up to 1 year from the date of receipt, and avoid repeat freeze-thaw cycles.

TARGET INFORMATION

Gene ID	27040
Gene Symbol	LAT
Uniprot ID	LAT_HUMAN
Immunogen	Synthesized peptide derived from human LAT (Phospho Tyr255)
Immunogen Region	
Specificity	This antibody detects endogenous levels of Human, Mouse, Rat LAT (Phospho Tyr255)
Immunogen Sequence	



Immunohistochemical analysis of paraffin-embedded human Gastric adenocarcinoma. 1. Antibody was diluted at 1:200 (4A°C overnight). 2. Tris-EDTA, pH9.0 was used for antigen retrieval. 3. Secondary antibody was diluted at 1:200 (room temperature, 45min).