

Anti-Phospho-EPHA7-Tyr608 antibody (STJA0009861)

STJA0009861

GENERAL INFORMATION

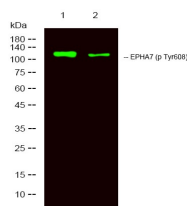
Product Type	Primary antibodies
Short Description	Rabbit polyclonal antibody anti-Phospho-Ephrin type-A receptor 7-Tyr608 is suitable for use in Western Blot and ELISA research applications.
Applications	WB/ELISA
Host/Source	Rabbit
Reactivity	Human/Mouse/Rat

PRODUCT PROPERTIES

Clonality	Polyclonal
Clone ID	
Concentration	1 mg/mL
Conjugation	Unconjugated
Purification	The antibody was affinity-purified from rabbit serum by affinity-chromatography using specific immunogen.
Dilution Range	WB 1:1000-2000 ELISA 1:5000-20000
Formulation	Liquid in PBS containing 50% Glycerol, 0.5% BSA and 0.02% Sodium Azide.
Isotype	IgG
Storage Instruction	Store at -20°C for up to 1 year from the date of receipt, and avoid repeat freeze-thaw cycles.

TARGET INFORMATION

Gene ID	2045
Gene Symbol	EPHA7
Uniprot ID	EPHA7_HUMAN
Immunogen	Synthesized peptide derived from human EPHA7 (Phospho Tyr608)
Immunogen Region	
Specificity	This antibody detects endogenous levels of Human, Mouse, Rat EPHA7 (Phospho Tyr608)
Immunogen Sequence	



Western Blot analysis of 1 HeLa, 2 treated with LPS 100ng/mL, 20min, using primary antibody at 1:1000 dilution. Secondary antibody (STJS000791) was diluted at 1:10000

This product is suitable for in-vitro studies under the RESEARCH USE ONLY [RUO] licence. This product must not be used as for diagnostic or other medical purposes.
St John's Laboratory Ltd, Knowledge Dock Business Centre, University Way, London, E16 2RD | Tel: 0208 223 3081