

Anti-Phospho-MYLK-Tyr471 antibody (STJA0009855)

STJA0009855

GENERAL INFORMATION

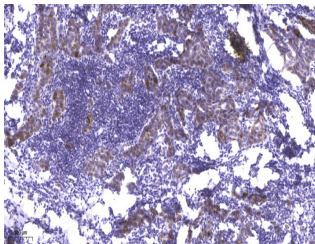
Product Type	Primary antibodies
Short Description	Rabbit polyclonal antibody anti-Phospho-Myosin light chain kinase, smooth muscle-Tyr471 is suitable for use in Western Blot and Immunohistochemistry research applications.
Applications	WB/IHC
Host/Source	Rabbit
Reactivity	Human/Mouse/Rat

PRODUCT PROPERTIES

Clonality	Polyclonal
Clone ID	
Concentration	1 mg/mL
Conjugation	Unconjugated
Purification	The antibody was affinity-purified from rabbit serum by affinity-chromatography using specific immunogen.
Dilution Range	WB 1:500-2000 IHC-p 1:50-300
Formulation	Liquid in PBS containing 50% Glycerol, 0.5% BSA and 0.02% Sodium Azide.
Isotype	IgG
Storage	Store at -20°C for up to 1 year from the date of receipt, and avoid repeat freeze-thaw cycles.
Instruction	

TARGET INFORMATION

Gene ID	4638
Gene Symbol	MYLK
Uniprot ID	MYLK_HUMAN
Immunogen	Synthesized peptide derived from human MLCK (Phospho Tyr471)
Immunogen Region	
Specificity	This antibody detects endogenous levels of Human, Mouse, Rat MLCK (Phospho Tyr471)
Immunogen Sequence	



Immunohistochemical analysis of paraffin-embedded human Breast cancer. 1. Antibody was diluted at 1:200 (4h°C overnight). 2. Tris-EDTA, pH9.0 was used for antigen retrieval. 3. Secondary antibody was diluted at 1:200 (room temperature, 45min).

This product is suitable for in-vitro studies under the RESEARCH USE ONLY [RUO] licence. This product must not be used as for diagnostic or other medical purposes.
St John's Laboratory Ltd, Knowledge Dock Business Centre, University Way, London, E16 2RD | Tel: 0208 223 3081