

Anti-PRKCQ antibody (STJA0009845)

STJA0009845

GENERAL INFORMATION

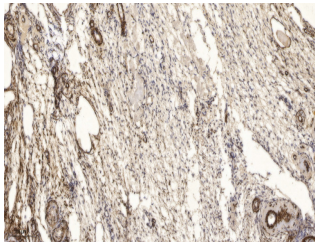
| | |
|--------------------------|---|
| Product Type | Primary antibodies |
| Short Description | Rabbit polyclonal antibody anti-Protein kinase C theta type is suitable for use in Western Blot and Immunohistochemistry research applications. |
| Applications | WB/IHC |
| Host/Source | Rabbit |
| Reactivity | Human/Mouse/Rat |

PRODUCT PROPERTIES

| | |
|----------------------------|---|
| Clonality | Polyclonal |
| Clone ID | |
| Concentration | 1 mg/mL |
| Conjugation | Unconjugated |
| Purification | The antibody was affinity-purified from rabbit serum by affinity-chromatography using specific immunogen. |
| Dilution Range | WB 1:500-2000 IHC-p 1:50-300 |
| Formulation | Liquid in PBS containing 50% Glycerol, 0.5% BSA and 0.02% Sodium Azide. |
| Isotype | IgG |
| Storage Instruction | Store at -20°C for up to 1 year from the date of receipt, and avoid repeat freeze-thaw cycles. |

TARGET INFORMATION

| | |
|---------------------------|--|
| Gene ID | 5588 |
| Gene Symbol | PRKCQ |
| Uniprot ID | KPCT_HUMAN |
| Immunogen | Synthesized peptide derived from human Phospho PKC Theta (Y90) |
| Immunogen Region | |
| Specificity | This antibody detects endogenous levels of Human, Mouse, Rat Phospho PKC Theta (Y90) |
| Immunogen Sequence | |



Immunohistochemical analysis of paraffin-embedded human oophoroma. 1. Antibody was diluted at 1:200 (4h°C overnight). 2. Tris-EDTA, pH9.0 was used for antigen retrieval. 3. Secondary antibody was diluted at 1:200 (room temperature, 45min).

This product is suitable for in-vitro studies under the RESEARCH USE ONLY [RUO] licence. This product must not be used as for diagnostic or other medical purposes.
St John's Laboratory Ltd, Knowledge Dock Business Centre, University Way, London, E16 2RD | Tel: 0208 223 3081