

## Anti-Phospho-NFATC2-Ser326 antibody (STJA0009817)

STJA0009817

### GENERAL INFORMATION

<b>Product Type</b>	Primary antibodies
<b>Short Description</b>	Rabbit polyclonal antibody anti-Phospho-Nuclear factor of activated T-cells, cytoplasmic 2-Ser326 is suitable for use in Western Blot, ELISA and Immunohistochemistry research applications.
<b>Applications</b>	WB/ELISA/IHC
<b>Host/Source</b>	Rabbit
<b>Reactivity</b>	Human/Mouse/Rat

### PRODUCT PROPERTIES

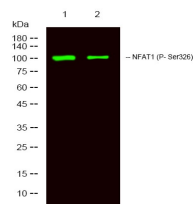
<b>Clonality</b>	Polyclonal
<b>Clone ID</b>	
<b>Concentration</b>	1 mg/mL
<b>Conjugation</b>	Unconjugated
<b>Purification</b>	The antibody was affinity-purified from rabbit serum by affinity-chromatography using specific immunogen.
<b>Dilution Range</b>	WB 1:500-2000 IHC-p 1:50-300 ELISA 2000-20000
<b>Formulation</b>	Liquid in PBS containing 50% Glycerol, 0.5% BSA and 0.02% Sodium Azide.
<b>Isotype</b>	IgG
<b>Storage Instruction</b>	Store at -20°C for up to 1 year from the date of receipt, and avoid repeat freeze-thaw cycles.

### TARGET INFORMATION

<b>Gene ID</b>	4773
<b>Gene Symbol</b>	NFATC2
<b>Uniprot ID</b>	NFAC2_HUMAN
<b>Immunogen</b>	Synthesized peptide derived from human NFAT1 (Phospho Ser326)
<b>Immunogen Region</b>	
<b>Specificity</b>	This antibody detects endogenous levels of Human, Mouse, Rat NFAT1 (Phospho Ser326)
<b>Immunogen Sequence</b>	



Immunohistochemical analysis of paraffin-embedded human uterus. 1, Antibody was diluted at 1:200 (4A°C overnight). 2, Tris-EDTA, pH9.0 was used for antigen retrieval. 3, Secondary antibody was diluted at 1:200 (room temperature, 45min).



Western Blot analysis of 1 MCF-7 treated with LPS, 2 MCF-7, using primary antibody at 1:1000 dilution. Secondary antibody (STJS000791) was diluted at 1:10000

This product is suitable for in-vitro studies under the RESEARCH USE ONLY [RUO] licence. This product must not be used as for diagnostic or other medical purposes.  
St John's Laboratory Ltd, Knowledge Dock Business Centre, University Way, London, E16 2RD | Tel: 0208 223 3081